

2019-2020 SCHOOL BROCHURE

PUBLIC SCHOOLS & PRIVATE SCHOOLS



WWW.ALAMOTITLESA.COM

This product is being provided as a general service to the community at large without the condition of the referral of title insurance business. Alamo Title makes no express or implied warranty with respect to the information contained herein and accepts no liability for the consequences of any actions taken on the basis of said information.



Overview of the 2019 State Accountability System

Student Achievement

All Students STAAR

- Combined over all subject areas evaluated (reading, mathematics, writing, science, and social studies)
- Credit awarded for Approaches Grade Level or above, Meets Grade Level or above, and Masters Grade Level on
 - ⊕ STAAR* (with and without accommodations) in grades 3–8 (including Spanish versions where applicable);
 - ⊕ EOC assessments (with and without accommodations); and
 - ⊕ STAAR Alternate 2 at Level II Satisfactory and Level III Accomplished standards.

College, Career, and Military Readiness

Percentage of annual graduates that accomplish any one of the following:

- Meet TSI criteria in ELA/reading and mathematics on assessments or college prep courses
- Meet AP/IB criteria
- Earn dual-course credits
- Enlist in the U.S. Armed Forces
- Earn an approved industry-based certification
- Earn an associate’s degree while in high school
- Graduate with completed IEP and workforce readiness
- Earn a Level I or Level II certificate
- Complete an OnRamps dual-enrollment course
- Graduate under an advanced degree plan and be identified as a current special education student
- Complete CTE coherent sequence coursework and earn credit aligned with approved industry-based certifications (one-half point credit)

Graduation Rate

Four-year, five-year, or six-year graduation rate (or annual dropout rate if no graduation rate)

Domain Score

For elementary and middle schools, the Student Achievement domain score is based solely on the STAAR component. For districts and high schools, the three components are weighted 40%-40%-20%, respectively.

School Progress

All Students Part A: Academic Growth

Credit awarded for students who improve performance year over year as measured by STAAR progress measures and performance levels on STAAR reading and mathematics.

Part B: Relative Performance

Credit awarded based on performance relative to similar districts or campuses.

Domain Score

The School Progress domain score is the better of Part A: Academic Growth or Part B: Relative Performance.

Closing the Gaps

All Students and Disaggregated Student Groups

Student performance disaggregated by the following:

- All students
- Race/ethnicity
- Economically disadvantaged status
- Current special education
- Former special education
- Current and monitored English learners
- Continuously enrolled
- Non-continuously enrolled

Components

- Academic Achievement
- Federal Graduation or Growth Status
- English Language Proficiency
- School Quality or Student Success

Domain Score

Credit is awarded based on weighted performance of student groups against annual targets.

The Closing the Gaps domain score is based on the four components weighted according to district or campus type.

Better of either **Student Achievement** or **School Progress** domain = **70%** of overall rating

30% of overall rating

Distinction designations are awarded to campuses in ELA/reading, mathematics, science, social studies, Academic Growth, and Closing the Gaps. Distinction designations are awarded to campuses and districts in Postsecondary Readiness. Districts and campuses must be rated A, B, C, or D overall to be eligible for distinctions.

*STAAR results from EL students in their first year in U.S. schools are excluded from accountability calculations. STAAR results from EL students in their second year in U.S. schools are included via the EL performance measure. STAAR Alternate 2 results are included without regard to number of years in U.S. schools. For more information, see the [2019 Accountability Manual](#).

Highlights of the 2019 Accountability System Ratings

In 2018, the state academic accountability system underwent an overhaul under House Bill (HB) 22 (85th Texas Legislature, Regular Session, 2017). HB 22 established three domains of indicators to evaluate the academic performance of districts, open-enrollment charter schools, and campuses: Student Achievement, School Progress, and Closing the Gaps. HB 22 requires the commissioner to assign districts and campuses a rating of *A*, *B*, *C*, *D*, or *F* for overall performance, as well as for performance in each domain.

Overview of the 2019 Accountability System

The overall design of the accountability system evaluates performance according to three domains:

Student Achievement evaluates performance across all subjects for all students, on both general and alternate assessments, College, Career, and Military Readiness (CCMR) indicators, and graduation rates.

School Progress measures district and campus outcomes in two areas: the number of students that grew at least one year academically (or are on track) as measured by STAAR results and the achievement of all students relative to districts or campuses with similar economically disadvantaged percentages.

Closing the Gaps uses disaggregated data to demonstrate differentials among racial/ethnic groups, socioeconomic backgrounds and other factors. The indicators included in this domain, as well as the domain's construction, align the state accountability system with the federal Every Student Succeeds Act (ESSA).

The State of Texas

More than five million students were enrolled in Texas public schools in the 2018–19 school year, and they took nearly nine million STAAR assessments in reading, mathematics, writing, science, and social studies. Of all assessments taken, 78 percent met the Approaches Grade Level standard or above, 50 percent met the Meets Grade Level standard or above, and 24 percent met the Masters Grade Level standard. Of the 335,500 2018 annual graduates evaluated in accountability, 65 percent met the criteria for one or more College, Career, and Military Readiness indicators. Statewide, the 2018 4-year graduation rate for all students was 90.0 percent.

Districts (including Open-Enrollment Charter Schools)

Of the 1,201 districts in Texas, 301 (25.1%) earned an *A* overall rating, 677 (56.4%) earned a *B* overall rating, 154 (12.8%) earned a *C* overall rating, 43 (3.6%) earned a *D* overall rating, and 14 (1.2%) earned an *F* overall rating.

District Accountability Rating	Count	Percentage
<i>A</i>	301	25.1%
<i>B</i>	677	56.4%
<i>C</i>	154	12.8%
<i>D</i>	43	3.6%
<i>F</i>	14	1.2%
<i>Not Rated</i>	12	1.0%
Totals	1,201	100%

Highlights of the 2019 Accountability System Ratings

Campuses (including Open-Enrollment Charter Schools)

Of the 8,838 campuses in Texas, 1,750 (19.8%) earned an *A* overall rating, 3,276 (37.1%) campuses earned a *B* overall rating, 2,171 (24.6%) earned a *C* overall rating, 703 (8.0%) earned a *D* overall rating and 402 (4.5%) earned an *F* overall rating. The remaining 536 (6.1%) campuses were labeled *Not Rated*.

Campus Accountability Rating	Count	Percentage
<i>A</i>	1,750	19.8%
<i>B</i>	3,276	37.1%
<i>C</i>	2,171	24.6%
<i>D</i>	703	8.0%
<i>F</i>	402	4.5%
<i>Not Rated</i>	536	6.1%
Totals	8,838	100%

Open-Enrollment Charters

Of the 179 open-enrollment charter schools in Texas, 44 (24.6%) earned an *A* overall rating, 55 (30.7%) earned a *B* overall rating, 40 (22.3%) earned a *C* overall rating, 22 (12.3%) earned a *D* overall rating, and eight (4.5%) earned an *F* overall rating. 10 (5.6%) open-enrollment charter schools were labeled *Not Rated*.

Of the 747 open-enrollment charter campuses in Texas, 166 (22.2%) earned an *A* overall rating, 225 (30.1%) earned a *B* overall rating, 157 (21.0%) earned a *C* overall rating, 76 (10.2%) earned a *D* overall rating, and 39 (5.2%) earned an *F* overall rating. The remaining 84 (11.2%) charter schools were labeled *Not Rated*.

Alternative Education Campuses (AECs)

Of the 379 AECs evaluated under the alternative education accountability (AEA) provisions, 72 (19.0%) earned an *A* overall rating, 71 (18.7%) earned a *B* overall rating, 49 (12.9%) earned a *C* overall rating, 56 (14.8%) earned a *D* overall rating, and 15 (4.0%) earned an *F* overall rating. The remaining 116 (30.6%) alternative education campuses (AECs) were labeled *Not Rated*, seven of which are AECs of choice, 18 are dropout recovery schools, and 91 are residential treatment facilities (RTFs).

Of the 379 AECs, 155(40.9%) are charter schools. Of these, 41 (26.5%) earned an *A* overall rating, 17 (11.0%) earned a *B* overall rating, 19 (12.3%) earned a *C* overall rating, 26 (16.8%) earned a *D* overall rating and four (2.6%) earned an *F* overall rating. The remaining 48 (31.0%) charter AECs were labeled *Not Rated* as they are RTFs.

Districts and Campuses Labeled *Not Rated*

Of the 1,201 districts and open-enrollment charter schools evaluated, twelve (1.0%) were labeled *Not Rated*. Of those, 10 (66.6%) were RTFs, and two were not rated for other reasons.

Of the 8,838 campuses evaluated, 536 (6.1%) campuses were labeled *Not Rated*. Of those campuses, 418 (77.9%) were juvenile justice alternative education programs, disciplinary alternative education programs, or RTFs; 108 (20.1%) could not be rated because they did not have enough assessment results to meet minimum-size requirements; and ten (1.8%) were not rated for other reasons.

Highlights of the 2019 Accountability System Ratings

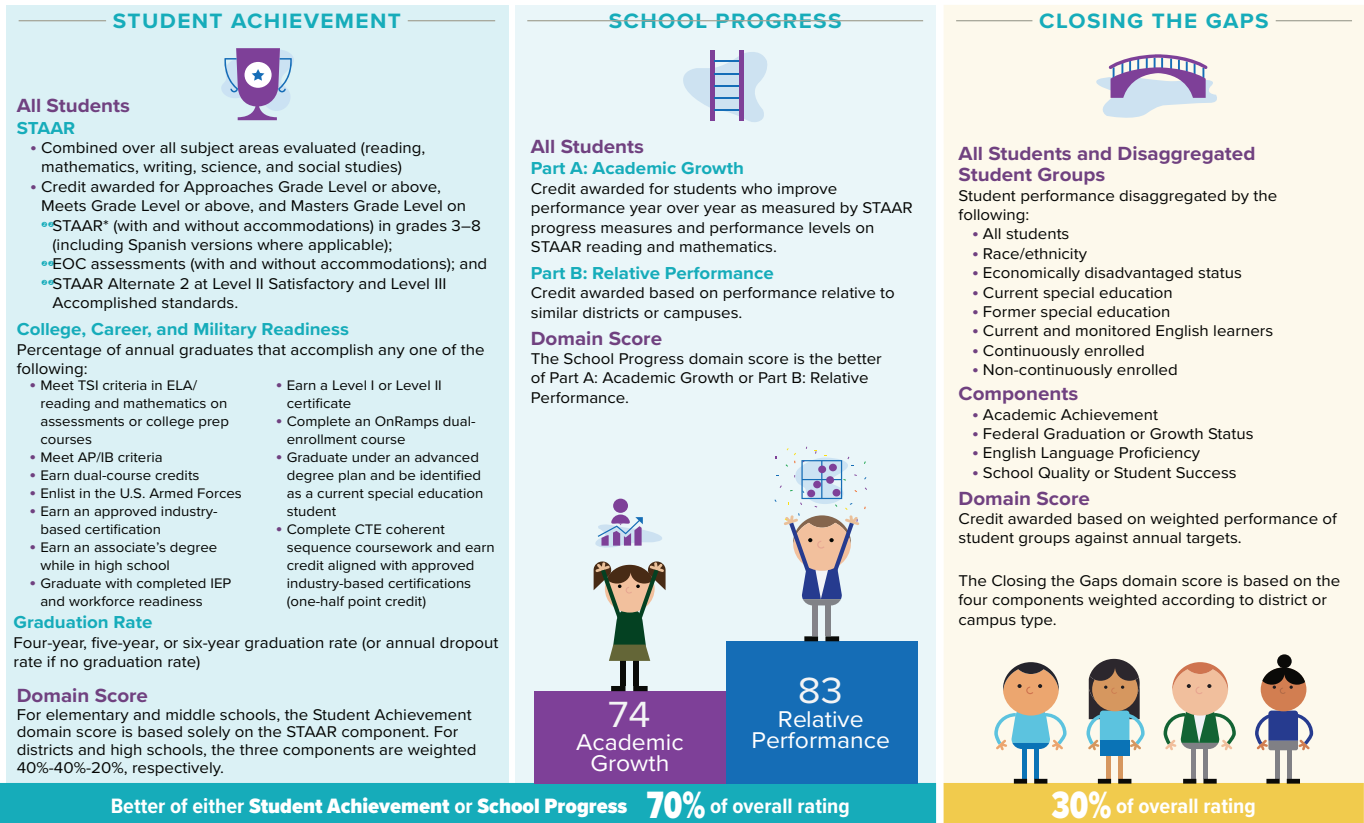
Distinction Designations

Only campuses and districts that receive an *A*, *B*, *C*, or *D* overall rating are eligible for distinction designations. AECs are not eligible for distinction designations.

Of the 8,838 campuses in Texas, 7,900 (89.4%) were evaluated for at least one distinction designation. Of those campuses, 2,504 (31.7%) earned a distinction for postsecondary readiness, 2,144 (27.1%) earned a distinction for comparative closing the gaps, 2,090 (26.4%) earned a distinction for comparative academic growth, 2,147 (27.1%) for achievement in English language arts/reading, 2,054 (26.0%) for achievement in science, 1,948 (24.6%) for achievement in mathematics, and 987 (12.4%) earned a distinction for achievement in social studies.

Altogether, 4,618 (52.3%) campuses earned one or more distinctions, while 424 (4.8%) campuses earned every distinction for which they were eligible. Of the 1,201 districts evaluated, 71 (5.9%) districts earned the distinction for postsecondary readiness.

OVERVIEW OF THE 2019 STATE ACCOUNTABILITY SYSTEM



Distinction designations are awarded to campuses in ELA/reading, mathematics, science, social studies, Academic Growth, and Closing the Gaps. Distinction designations are awarded to campuses and districts in Postsecondary Readiness. Campuses must be rated Met Standard overall to be eligible for distinction designations. Districts rated F overall and alternative education accountability campuses are not eligible for distinction designations.

*STAAR results from EL students in their first year in U.S. schools are excluded from accountability calculations. STAAR results from EL students in their second year in U.S. schools are included via the EL performance measure. STAAR Alternate 2 results are included without regard to number of years in U.S. schools. For more information, see the 2019 Accountability Manual.

ALAMO HEIGHTS ISD

Total Student Enrollment: **4,843**
Schools: **5**

ADDRESS: 7101 BROADWAY ST, SAN ANTONIO, TX, 78209
SUPERINTENDENT: DR DANA BASHARA
PHONE: (210) 824-2483 / <http://www.ahisd.net>

DISTRICT GRADE

A

Score is 91 out of 100

STUDENT ACHIEVEMENT

92

Score is 92 out of 100

How many students in this district graduate on time?

95

Score is 95 out of 100

SCHOOL PROGRESS

85

Score is 85 out of 100

How well did students perform on the STARR test?

89

Score is 89 out of 100

CLOSING THE GAPS

88

Score is 88 out of 100

How much did this district receive and spend per student?

PER STUDENT REVENUE \$11,677
STATE AVERAGE \$11,729

PER STUDENT EXPENDITURE \$17,313
STATE AVERAGE \$13,054

2019 A-F Accountability Listing

Alamo Heights ISD

District / Campus Name	School Type	Grades Served	Overall				Student Achievement		School Progress		Closing the Gaps			
			Ed	Eco Dis	Rating	Score	Rating	Score	Rating	Score	Rating	Score		
ALAMO HEIGHTS ISD			No	19.7%	A	91	A	92	B	85	B	80	B	88
CAMBRIDGE	Elementary	01 - 05	No	23.1%	C	77	C	78	C	75	F	58	C	74
HOWARD	Elementary	EE - KG	No	23.6%	A	91	N/R		N/R		N/R		N/R	
WOODRIDGE	Elementary	01 - 05	No	19.9%	A	91	A	90	B	88	C	70	A	92
ALAMO HEIGHTS	Middle School	06 - 08	No	20.1%	A	90	A	91	B	80	C	75	B	87
ALAMO HEIGHTS	High School	09 - 12	No	16.7%	B	89	A	93	C	76	C	78	B	80

BOERNE ISD

Total Student Enrollment: **9,133**
Schools: **10**

ADDRESS: 235 JOHNS RD, BOERNE, TX, 78006
SUPERINTENDENT: DR THOMAS PRICE
PHONE (830) 357-2000 / <http://boerneisd.net>

DISTRICT GRADE

A

Score is 94 out of 100

STUDENT ACHIEVEMENT

93

Score is 93 out of 100

How many students in this district graduate on time?

95

Score is 95 out of 100

SCHOOL PROGRESS

86

Score is 86 out of 100

How well did students perform on the STARR test?

91

Score is 91 out of 100

CLOSING THE GAPS

95

Score is 95 out of 100

How much did this district receive and spend per student?

PER STUDENT REVENUE \$11,074
STATE AVERAGE \$11,729

PER STUDENT EXPENDITURES \$18,241
STATE AVERAGE \$13,054

2019 A-F Accountability Listing

BOERNE ISD

District / Campus Name	School Type	Grades Served	Overall				Student Achievement		School Progress		Closing the Gaps			
			Ed	Eco Dis	Rating	Score	Rating	Score	Rating	Score	Rating	Score		
BOERNE ISD			No	18.3%	A	94	A	93	B	84	B	86	A	95
CIBOLO CREEK	Elementary	EE - 05	No	13.1%	A	90	A	91	B	80	C	72	B	87
CURINGTON	Elementary	EE - 05	No	33.2%	B	85	B	85	B	82	C	75	B	84
FABRA	Elementary	EE - 05	No	43.1%	B	88	A	90	C	77	B	85	B	84
FAIR OAKS RANCH	Elementary	EE - 05	No	7.3%	A	96	A	94	B	86	B	81	A	100
KENDALL	Elementary	EE - 05	No	30.0%	A	94	A	91	B	86	B	81	A	100
VAN RAUB	Elementary	EE - 05	No	8.8%	B	87	A	91	C	72	D	60	C	79
BOERNE MIDDLE NORTH	Middle School	06 - 08	No	26.2%	B	86	A	90	C	75	B	80	C	77
BOERNE MIDDLE SOUTH	Middle School	06 - 08	No	12.9%	B	89	A	92	B	83	C	79	B	82
BOERNE - SAMUEL V CHAMPION	High School	09 - 12	No	9.0%	A	93	A	95	C	79	B	81	B	88
BOERNE	High School	09 - 12	No	18.8%	A	92	A	94	C	70	B	80	B	88

COMAL ISD

Total Student Enrollment: **23,859**
Schools: **32**

ADDRESS: 1404 IH 35 N, NEW BRAUNFELS, TX, 78130
SUPERINTENDENT: MR ANDREW KIM
PHONE (830) 221-2000 / <https://www.comalisd.org>

DISTRICT GRADE

A

Score is 92 out of 100

STUDENT ACHIEVEMENT

91

Score is 91 out of 100

SCHOOL PROGRESS

87

Score is 87 out of 100

CLOSING THE GAPS

93

Score is 93 out of 100

How many students in this district graduate on time?

90

Score is 90 out of 100

How well did students perform on the STARR test?

91

Score is 91 out of 100

How much did this district receive and spend per student?

PER STUDENT REVENUE
\$11,294
STATE AVERAGE \$11,729

PER STUDENT EXPENDITURE
\$14,916
STATE AVERAGE \$13,054

2019 A-F Accountability Listing

COMAL ISD

District / Campus Name	School Type	Grades Served	Overall				Student Achievement		School Progress		Closing the Gaps			
			Ed	Eco Dis	Rating	Score	Rating	Score	Academic Rating	Growth Score	Relative Performance Score	Rating	Score	
COMAL ISD			No	29.7%	A	92	A	91	B	87	B	85	A	93
ARLON R SEAY	Elementary	KG - 05	No	23.0%	A	94	A	90	A	91	C	72	A	100
BILL BROWN	Elementary	PK - 05	No	24.4%	A	93	A	91	B	88	B	81	A	96
CLEAR SPRING	Elementary	PK - 05	No	50.3%	C	76	C	77	C	74	C	74	C	74
FREIHEIT	Elementary	EE - 05	No	53.4%	B	84	C	76	B	82	C	75	B	87
GARDEN RIDGE	Elementary	EE - 05	No	21.7%	A	91	A	91	B	85	C	78	A	92
GOODWIN FRAZIER	Elementary	EE - 05	No	61.2%	C	79	C	75	B	80	C	77	C	78
HOFFMANN LANE	Elementary	KG - 05	No	5.4%	A	97	A	95	A	91	B	84	A	100
INDIAN SPRINGS	Elementary	KG - 05	No	9.3%	A	92	A	91	B	86	D	69	A	94
JOHNSON RANCH	Elementary	EE - 05	No	14.1%	A	90	A	91	C	75	C	72	B	86
KINDER RANCH	Elementary	PK - 05	No	29.6%	B	86	A	90	C	70	C	79	C	78
MH SPECHT	Elementary	PK - 05	No	20.4%	A	93	A	91	B	83	C	77	A	98
MORNINGSIDE	Elementary	EE - 05	No	68.5%	B	81	C	73	B	83	C	77	C	77
MT VALLEY	Elementary	EE - 05	No	49.3%	B	85	B	83	B	85	B	82	B	85
OAK CREEK	Elementary	EE - 05	No	34.7%	A	94	A	91	B	80	B	84	A	100
RAHE BULVERDE	Elementary	EE - 05	No	20.8%	A	91	A	91	B	80	C	79	A	92
REBECCA CREEK	Elementary	PK - 05	No	49.5%	B	81	B	83	C	77	B	82	C	76
STARTZVILLE	Elementary	PK - 05	No	64.3%	B	81	C	78	C	75	B	83	C	75
TIMBERWOOD PARK	Elementary	PK - 05	No	12.3%	A	96	A	94	A	92	B	85	A	100
CANYON	Middle School	06 - 08	No	49.8%	B	85	B	83	B	80	B	82	B	89
CHURCH HILL	Middle School	06 - 08	No	28.2%	A	90	A	91	B	81	B	84	B	87
DANVILLE	Middle School	06 - 08	No	35.6%	B	84	B	87	C	77	B	81	C	77
MT VALLEY	Middle School	06 - 08	No	46.3%	B	86	B	87	B	80	B	87	B	85
PIEPER RANCH	Middle School	06 - 08	No	17.5%	A	90	A	92	B	81	B	80	B	85
SMITHSON VALLEY	Middle School	06 - 08	No	10.0%	A	91	A	92	B	86	C	74	B	88
SPRING BRANCH	Middle School	06 - 08	No	22.7%	B	89	A	91	C	75	B	81	B	83
CANYON	High School	09 - 12	No	32.0%	B	88	A	90	B	81	B	82	B	83
CANYON LAKE	High School	09 - 12	No	37.8%	B	88	B	89	C	70	B	81	B	86
COMAL ACADEMY	High School	11 - 12	Yes	27.9%	A	92	A	92	N/R		N/R		N/R	
JJAP	High School	09 - 09	No	0.0%	N/R		N/R		N/R		N/R		N/R	
MEMORIAL EARLY COLLEGE H S WITH ST	High School	09 - 12	No	20.3%	A	99	A	98	B	80	A	93	A	100
SMITHSON VALLEY	High School	09 - 12	No	13.0%	A	91	A	94	B	83	B	80	B	84
COMAL DISCIPLINE CENTER	Elem/Secondary	04 - 12	No	45.5%	N/R		N/R		N/R		N/R		N/R	



EDGEWOOD ISD

Total Student Enrollment: **10,166**
Schools: **20**

ADDRESS : 5358 W COMMERCE ST, SAN ANTONIO, TX, 78237
SUPERINTENDENT: DR EDUARDO HERNANDEZ
PHONE (210) 444-4500 / <https://www.eisd.net>

DISTRICT GRADE

C

Score is 78 out of 100

STUDENT
ACHIEVEMENT

69

Score is 69 out of 100

How many students
in this district
graduate on time?

65

Score is 65 out of 100

SCHOOL
PROGRESS

81

Score is 81 out of 100

How well did
students perform on
the STARR test?

58

Score is 58 out of 100

CLOSING
THE GAPS

70

Score is 70 out of 100

How much did this
district receive and
spend per student?

PER STUDENT REVENUE
\$12,523
STATE AVERAGE \$11,729

PER STUDENT EXPENDITURE
\$13,375
STATE AVERAGE \$13,054

2019 A-F Accountability Listing

EDGEWOOD ISD

District / Campus Name	School Type	Grades Served	Ed	Eco Dis	Overall		Student Achievement		School Progress		Closing the Gaps			
					Rating	Score	Rating	Score	Rating	Score	Rating	Score		
EDGEWOOD ISD		No	94.7%	C	78	D	69	F	57	B	81	C	70	
ALONSO S PERALES	Elementary	PK - 05	No	96.0%	F	52	F	56	F	57	F	59	F	37
CARDENAS CENTER	Elementary	EE - PK	No	99.2%	C	76	N/R		N/R		N/R		N/R	
GARDENDALE	Elementary	PK - 05	No	92.5%	F	58	F	56	D	62	F	59	F	48
H B GONZALEZ	Elementary	PK - 05	No	94.1%	D	67	F	55	D	67	F	57	D	67
L B JOHNSON	Elementary	PK - 05	No	95.5%	F	55	F	58	F	59	D	63	F	37
LAS PALMAS	Elementary	PK - 05	No	96.2%	D	66	F	50	D	67	F	52	D	63
LOMA PARK	Elementary	PK - 05	No	99.7%	F	51	F	56	F	52	F	59	F	31
ROOSEVELT	Elementary	KG - 05	No	89.3%	F	54	F	54	F	56	F	55	F	48
ROY CISNEROS	Elementary	PK - 05	No	93.3%	C	76	C	70	C	72	C	77	C	74
STAFFORD CENTER	Elementary	EE - PK	No	100.0%	F	59	N/R		N/R		N/R		N/R	
STAFFORD	Elementary	KG - 05	No	93.4%	F	59	F	57	D	62	D	60	F	52
WINSTON	Elementary	PK - 05	No	95.4%	F	48	F	54	F	55	F	56	F	30
BRENTWOOD	Middle School	06 - 08	No	95.2%	F	59	F	58	F	55	D	69	F	36
E T WRENN	Middle School	06 - 08	No	94.5%	F	59	F	59	F	56	C	70	F	59
GUS GARCIA	Middle School	06 - 08	No	94.3%	D	63	D	60	F	57	C	72	F	42
BEXAR CO J J A E P	High School	09 - 11	No	100.0%	N/R		N/R		N/R		N/R		N/R	
JOHN F KENNEDY	High School	09 - 12	No	92.0%	C	76	C	74	D	66	C	78	C	72
MEMORIAL	High School	09 - 12	No	94.4%	B	80	C	75	C	79	B	82	C	75
STEAM AT THE FINE ARTS ACADEMY	High School	09 - 09	No	90.3%	C	78	C	72	C	70	B	81	C	71
ALTERNATIVE CENTER	Elem/Secondary	06 - 12	No	89.3%	N/R		N/R		N/R		N/R		N/R	



HARLANDALE ISD

ADDRESS: 102 GENEVIEVE ST, SAN ANTONIO, TX, 78214

SUPERINTENDENT: MS SAMANTHA GALLEGOS

PHONE (210) 989-4300/http://www.harlandale.net

Total Student Enrollment: **14,073**

Schools: **31**

DISTRICT GRADE

B

Score is 86 out of 100

STUDENT
ACHIEVEMENT

84

Score is 84 out of 100

SCHOOL
PROGRESS

90

Score is 90 out of 100

CLOSING
THE GAPS

76

Score is 76 out of 100

How many students
in this district
graduate on time?

90

Score is 90 out of 100

How well did
students perform on
the STARR test?

73

Score is 73 out of 100

How much did this
district receive and
spend per student?

PER STUDENT REVENUE
\$12,423
STATE AVERAGE \$11,729

PER STUDENT EXPENDITURE
\$14,525
STATE AVERAGE \$13,054

2019 A-F Accountability Listing

HARLANDALE ISD

District / Campus Name	School Type	Grades Served	Overall		Student Achievement		School Progress				Closing the Gaps			
			Ed	Eco Dis	Rating	Score	Rating	Score	Academic Rating	Growth Score	Relative Rating	Performance Score	Rating	Score
HARLANDALE ISD			No	88.0%	B	86	B	84	C	76	A	90	C	76
BELLAIRE	Elementary	EE - 05	No	85.9%	D	65	D	67	F	55	C	72	F	47
CARROLL BELL	Elementary	PK - 05	No	82.8%	C	78	C	72	C	74	B	80	C	74
COLLIER DAEP	Elementary	05 - 05	No	100.0%	N/R		N/R		N/R		N/R		N/R	
COLLIER	Elementary	PK - 05	No	91.9%	B	87	C	73	A	91	B	82	C	76
COLUMBIA HEIGHTS	Elementary	PK - 05	No	92.3%	C	70	D	60	C	72	D	67	D	65
E H GILBERT	Elementary	PK - 05	No	90.9%	C	77	C	71	C	74	C	79	C	73
GILLETTE	Elementary	PK - 05	No	91.5%	A	90	C	78	B	86	B	87	A	96
H W SCHULZE	Elementary	PK - 05	No	87.9%	B	89	C	76	B	88	B	84	A	90
MORRILL	Elementary	PK - 05	No	89.1%	B	83	C	77	C	70	B	86	C	76
RAYBURN	Elementary	EE - 05	No	87.4%	C	73	D	67	C	72	C	73	C	72
STONEWALL/FLANDERS	Elementary	PK - 05	No	96.6%	C	77	D	60	C	79	D	69	C	71
V M ADAMS	Elementary	PK - 05	No	96.4%	D	69	D	62	D	67	C	70	D	65
VESTAL	Elementary	PK - 05	No	92.8%	B	85	C	77	C	75	B	86	B	83
WRIGHT	Elementary	PK - 05	No	92.4%	C	76	D	69	C	77	C	75	C	75
A LEAL JR	Middle School	06 - 08	No	91.7%	C	78	C	71	C	72	B	82	C	70
FENLEY TRANSITIONAL	Middle School	06 - 08	No	80.0%	N/R		N/R		N/R		N/R		N/R	
HAC DAEP	Middle School	07 - 08	No	100.0%	N/R		N/R		N/R		N/R		N/R	
HARLANDALE ALTERNATIVE CENTER BOOT	Middle School	08 - 08	No	100.0%	N/R		N/R		N/R		N/R		N/R	
HARLANDALE	Middle School	06 - 08	No	89.0%	B	85	C	75	C	74	B	87	B	80
KINGSBOROUGH	Middle School	06 - 08	No	87.6%	B	81	C	74	D	66	B	85	C	72
TEJEDA JUNIOR ACADEMY	Middle School	08 - 08	Yes	100.0%	C	70	C	73	B	87	N/R		F	30
TERRELL WELLS	Middle School	06 - 08	No	88.8%	B	81	C	74	C	70	B	85	C	73
BEXAR CO J J A E P	High School	07 - 11	No	100.0%	N/R		N/R		N/R		N/R		N/R	
FENLEY TRANSITIONAL	High School	09 - 12	No	88.9%	N/R		N/R		N/R		N/R		N/R	
FRANK M TEJEDA ACADEMY	High School	09 - 12	Yes	97.3%	C	78	B	84	B	85	N/R		D	62
HAC DAEP	High School	09 - 11	No	100.0%	N/R		N/R		N/R		N/R		N/R	
HARLANDALE ALTERNATIVE CENTER BOOT	High School	09 - 11	No	100.0%	N/R		N/R		N/R		N/R		N/R	
HARLANDALE	High School	09 - 12	No	84.8%	B	83	B	83	C	75	B	87	C	75
HARLANDALE ISD STEM ECHS-ALAMO	High School	09 - 12	No	68.8%	A	92	A	96	F	51	B	89	B	84
JEWEL C WIETZEL CENTER	High School	08 - 12	No	25.9%	N/R		N/R		N/R		N/R		N/R	
MCCOLLUM	High School	09 - 12	No	80.2%	B	84	B	84	C	78	B	88	C	76



JUDSON ISD

Total Student Enrollment: **22,848**
Schools: **32**

ADDRESS: 8012 SHIN OAK, LIVE OAK, TX, 78233
SUPERINTENDENT: DR. JEANETTE BALL
PHONE: (210) 945-5100/http://www.judsonisd.org

DISTRICT GRADE

B

Score is 83 out of 100

STUDENT
ACHIEVEMENT

77

Score is 77 out of 100

SCHOOL
PROGRESS

86

Score is 86 out of 100

CLOSING
THE GAPS

77

Score is 77 out of 100

How many students
in this district
graduate on time?

65

Score is 65 out of 100

How well did
students perform on
the STARR test?

76

Score is 76 out of 100

How much did this
district receive and
spend per student?

PER STUDENT REVENUE
\$11,139
STATE AVERAGE \$11,729

PER STUDENT EXPENDITURE
\$14,148
STATE AVERAGE \$13,054

2019 A-F Accountability Listing

JUDSON ISD

District / Campus Name	School Type	Grades Served	Overall				Student Achievement		School Progress				Closing the Gaps	
			Ed	Eco Dis	Rating	Score	Rating	Score	Academic Rating	Growth Score	Relative Rating	Performance Score	Rating	Score
JUDSON ISD			No	67.5%	B	83	C	77	D	69	B	86	C	77
CANDLEWOOD	Elementary	EE - 05	No	83.9%	C	73	F	57	C	74	F	59	C	71
CONVERSE	Elementary	EE - 05	No	75.6%	C	70	D	62	C	72	D	63	D	65
COPPERFIELD	Elementary	EE - 05	No	60.4%	B	87	C	77	B	86	B	81	B	88
CORONADO VILLAGE	Elementary	PK - 05	No	61.3%	B	81	C	76	C	75	C	79	B	86
CRESTVIEW	Elementary	PK - 05	No	64.4%	A	93	A	92	B	80	A	92	A	94
ED FRANZ	Elementary	PK - 05	No	68.8%	D	68	C	70	D	62	C	70	D	64
ELOLF	Elementary	PK - 05	No	74.7%	C	79	C	73	C	74	C	79	C	78
ESCONDIDO	Elementary	EE - 05	No	67.7%	C	73	C	72	C	70	C	73	C	73
HOPKINS	Elementary	EE - 05	No	85.3%	C	74	D	69	C	74	C	74	C	73
JAMES L MASTERS	Elementary	EE - 05	No	60.6%	C	77	C	75	C	75	C	77	C	76
MARY LOU HARTMAN	Elementary	EE - 05	No	74.1%	C	70	C	70	D	60	C	72	D	66
MILLER POINT	Elementary	EE - 05	No	75.5%	B	89	C	79	B	89	B	86	A	90
OLYMPIA	Elementary	EE - 05	No	53.1%	C	78	C	78	C	72	C	79	C	76
PARK VILLAGE	Elementary	EE - 05	No	99.0%	C	75	D	64	C	77	C	72	C	70
RICARDO SALINAS	Elementary	EE - 05	No	59.2%	B	84	C	78	C	77	B	81	A	90
ROLLING MEADOWS	Elementary	PK - 05	No	40.1%	B	87	B	88	C	79	B	81	B	86
SPRING MEADOWS	Elementary	EE - 05	No	83.0%	C	73	D	69	D	67	C	74	C	72
WILLIAM PASCHALL	Elementary	PK - 05	No	84.7%	C	70	D	67	F	58	C	72	D	65
WOODLAKE	Elementary	EE - 05	No	75.2%	C	79	C	73	C	74	C	79	C	78
WORTHAM OAKS	Elementary	EE - 05	No	37.6%	A	94	A	92	A	92	B	87	A	100
BEXAR CO J J A E P	Middle School	43654	No	0.0%	N/R	N/R	N/R	N/R	N/R	N/R	N/R	N/R	N/R	N/R
HENRY METZGER	Middle School	43624	No	76.3%	F	58	D	62	F	57	D	66	F	39
JUDSON	Middle School	43624	No	63.1%	C	78	C	78	D	60	B	83	D	67
KIRBY	Middle School	43624	No	85.3%	F	55	F	59	F	58	D	66	F	30
KITTY HAWK	Middle School	43624	No	53.8%	C	78	B	81	D	63	B	82	C	70
WOODLAKE HILLS	Middle School	43624	No	76.8%	C	74	C	73	D	60	B	81	F	56
JUDSON EARLY COLLEGE ACADEMY	High School	43720	No	44.7%	A	99	A	98	A	91	A	97	A	100
JUDSON	High School	43720	No	61.9%	C	79	C	77	D	68	B	81	C	74
JUDSON LEARNING ACAD	High School	43750	Yes	62.4%	B	88	B	87	N/R	N/R	N/R	N/R	N/R	N/R
KAREN WAGNER	High School	43720	No	75.5%	B	82	C	78	B	82	B	84	C	77
VETERANS MEMORIAL	High School	43720	No	47.2%	C	77	C	78	F	59	B	80	C	71
JUDSON CARE ACADEMY	Elem/Secondary	43628	No	90.8%	N/R	N/R	N/R	N/R	N/R	N/R	N/R	N/R	N/R	N/R



LACKLAND ISD

Total Student Enrollment: **1,072**
Schools: **3**

ADDRESS: 2460 KENLY AVE BLDG 8265, SAN ANTONIO, TX, 78236

SUPERINTENDENT: DR BURNIE L ROPER JR

PHONE (210) 357-5000/http://www.lacklandisd.net

DISTRICT GRADE

A

Score is 92 out of 100

STUDENT ACHIEVEMENT

93

Score is 93 out of 100

How many students in this district graduate on time?

100

Score is 100 out of 100

SCHOOL PROGRESS

82

Score is 82 out of 100

How well did students perform on the STARR test?

90

Score is 90 out of 100

CLOSING THE GAPS

90

Score is 90 out of 100

How much did this district receive and spend per student?

PER STUDENT REVENUE \$17,044
STATE AVERAGE \$11,729

PER STUDENT EXPENDITURE \$16,072
STATE AVERAGE \$13,054

2019 A-F Accountability Listing

LACKLAND ISD

District / Campus Name	School Type	Grades Served	Overall			Student Achievement		School Progress		Relative Performance		Closing the Gaps		
			Ed	Eco Dis	Rating	Score	Rating	Score	Rating	Score	Rating	Score		
LACKLAND ISD		No	18.3%	A	92	A	93	B	82	C	78	A	90	
LACKLAND	Elementary	EE - 05	No	19.3%	B	86	B	89	C	77	D	69	C	79
JJAEP	High School	10 - 10	No	100.0%	N/R		N/R	N/R		N/R		N/R	N/R	
VIRGINIA ALLRED STACEY JR/SR	Elem/Secondary	06 - 12	No	16.5%	A	91	A	93	B	80	C	75	B	87

MEDINA VALLEY ISD

Total Student Enrollment: **5,424**
Schools: **8**

ADDRESS: 8449 F M 471 S, CASTROVILLE, TX, 78009

SUPERINTENDENT: DR KENNETH ROHRBACH

PHONE (830) 931-2243/http://www.mvisd.com

DISTRICT GRADE

A

Score is 93 out of 100

STUDENT ACHIEVEMENT

92

Score is 92 out of 100

How many students in this district graduate on time?

95

Score is 95 out of 100

SCHOOL PROGRESS

92

Score is 92 out of 100

How well did students perform on the STARR test?

87

Score is 87 out of 100

CLOSING THE GAPS

96

Score is 96 out of 100

How much did this district receive and spend per student?

PER STUDENT REVENUE \$10,783
STATE AVERAGE \$11,729

PER STUDENT EXPENDITURES \$16,285
STATE AVERAGE \$13,054

2019 A-F Accountability Listing

MEDINA VALLEY ISD

District / Campus Name	School Type	Grades Served	Overall			Student Achievement		School Progress		Relative Performance		Closing the Gaps		
			Ed	Eco Dis	Rating	Score	Rating	Score	Rating	Score	Rating	Score		
MEDINA VALLEY ISD		No	51.2%	A	93	A	92	B	82	A	92	A	96	
CASTROVILLE	Elementary	EE - 05	No	54.2%	A	94	A	91	B	80	A	90	A	100
LACOSTE	Elementary	EE - 05	No	61.9%	B	86	B	86	C	75	B	87	B	83
LUCKEY RANCH	Elementary	EE - 05	No	63.2%	A	90	B	83	B	86	B	86	A	100
POTRANCO	Elementary	EE - 05	No	43.2%	A	92	B	88	B	83	B	83	A	100
MEDINA VALLEY LOMA ALTA	Middle School	06 - 08	No	48.6%	B	86	B	85	C	77	B	86	B	86
MEDINA VALLEY	Middle School	06 - 08	No	54.5%	B	80	B	82	C	70	B	84	C	72
BEXAR COUNTY JUVENILE JUSTICE ACAD	High School	09 - 09	No	100.0%	N/R		N/R	N/R		N/R		N/R	N/R	
MEDINA VALLEY	High School	09 - 12	No	44.1%	A	92	A	93	B	83	B	89	B	88

NEW BRAUNFELS

Total Student Enrollment: **9,110**
Schools: **15**

ADDRESS: BOX 311688, NEW BRAUNFELS, TX, 78131
SUPERINTENDENT: MR RANDY MOCZYGEMBA
PHONE (830) 643-5700/http://www.nbisd.org

DISTRICT GRADE

B

Score is 89 out of 100

STUDENT
ACHIEVEMENT

89

Score is 89 out of 100

SCHOOL
PROGRESS

83

Score is 83 out of 100

CLOSING
THE GAPS

89

Score is 89 out of 100

How many students
in this district
graduate on time?

90

Score is 90 out of 100

How well did
students perform on
the STARR test?

88

Score is 88 out of 100

How much did this
district receive and
spend per student?

PER STUDENT REVENUE
\$10,390
STATE AVERAGE \$11,729

PER STUDENT EXPENDITURE
\$11,153
STATE AVERAGE \$13,054

2019 A-F Accountability Listing

NEW BRAUNFELS ISD

District / Campus Name	School Type	Grades Served	Overall				Student Achievement		School Progress		Closing the Gaps			
			Ed	Eco Dis	Rating	Score	Rating	Score	Rating	Score	Rating	Score		
NEW BRAUNFELS ISD			No	38.4%	B	89	B	89	C	79	B	83	B	89
CARL SCHURZ	Elementary	KG - 05	No	49.6%	B	89	B	88	B	89	B	85	A	90
COUNTY LINE	Elementary	KG - 05	No	33.5%	A	91	A	90	B	80	B	81	A	92
KLEIN ROAD	Elementary	KG - 05	No	45.9%	C	77	C	77	C	70	C	73	C	76
LAMAR	Elementary	KG - 05	No	47.3%	B	80	B	82	B	82	B	80	C	75
LONE STAR EARLY CHILDHOOD CENTER	Elementary	EE - PK	No	81.8%	A	94	N/R		N/R		N/R		N/R	
MEMORIAL	Elementary	KG - 05	No	45.4%	D	61	C	72	F	57	F	59	F	35
SEELE	Elementary	KG - 05	No	43.8%	A	94	A	92	B	82	A	90	A	100
VERAMENDI	Elementary	KG - 05	No	32.2%	B	89	A	91	C	79	B	82	B	84
VOSS FARMS	Elementary	KG - 05	No	38.2%	B	86	B	83	B	80	C	77	A	94
WALNUT SPRINGS	Elementary	KG - 05	No	35.3%	A	94	A	91	B	88	B	85	A	100
NEW BRAUNFELS	Middle School	06 - 09	No	39.1%	B	83	B	85	C	70	B	80	C	77
OAKRUN	Middle School	06 - 08	No	34.8%	B	85	A	90	D	69	B	83	C	72
NEW BRAUNFELS	High School	09 - 12	No	26.9%	B	89	A	91	B	87	B	82	B	85
NEW BRAUNFELS H S NINTH GRADE	High School	09 - 10	No	36.4%	A	90	A	91	B	83	B	85	B	88
THE NBISD LEARNING CENTER	High School	10 - 12	Yes	60.5%	A	100	A	91	N/R		N/R		N/R	



NORTHEAST ISD

Total Student Enrollment: **64,850**
Schools: **75**

ADDRESS : 8961 TESORO DR, SAN ANTONIO, TX, 78217
SUPERINTENDENT: DR SEAN MAIKA
PHONE: 210-407-0541/http://www.neisd.net

DISTRICT GRADE

B

Score is 89 out of 100

STUDENT ACHIEVEMENT

86

Score is 86 out of 100

How many students in this district graduate on time?

75

Score is 75 out of 100

SCHOOL PROGRESS

89

Score is 89 out of 100

How well did students perform on the STARR test?

86

Score is 86 out of 100

CLOSING THE GAPS

89

Score is 89 out of 100

How much did this district receive and spend per student?

PER STUDENT REVENUE
\$11,543
STATE AVERAGE \$11,729

PER STUDENT EXPENDITURE
\$13,083
STATE AVERAGE \$13,054

2019 A-F Accountability Listing NORTHEAST ISD

District / Campus Name	School Type	Grades			Overall		Student Achievement		School Progress				Closing the Gaps	
		Served	Ed	Eco Dis	Rating	Score	Rating	Score	Academic Rating	Growth Score	Relative Rating	Performance Score	Rating	Score
DELLVIEW	Elementary	EE - 05	No	85.1%	B	81	C	75	C	75	B	83	C	76
EAST TERRELL HILLS	Elementary	PK - 05	No	87.4%	B	81	C	72	B	83	C	79	C	77
EL DORADO	Elementary	PK - 05	No	82.0%	C	74	D	62	C	75	D	66	C	72
ENCINO PARK	Elementary	EE - 05	No	24.9%	A	91	A	93	C	79	B	86	B	86
FOX RUN	Elementary	EE - 05	No	65.1%	B	89	B	86	B	85	B	88	A	90
HARDY OAK	Elementary	EE - 05	No	8.8%	A	97	A	95	A	92	B	85	A	100
HARMONY HILLS	Elementary	EE - 05	No	72.5%	F	58	D	62	D	60	D	60	F	48
HIDDEN FOREST	Elementary	KG - 05	No	18.7%	A	95	A	93	A	92	B	84	A	100
HUEBNER	Elementary	EE - 05	No	26.4%	B	88	B	89	B	89	C	74	B	86
JACKSON-KELLER	Elementary	KG - 05	No	86.8%	C	74	D	69	C	75	C	75	C	73
LARKSPUR	Elementary	KG - 05	No	79.8%	C	72	F	59	C	72	D	60	C	72
LAS LOMAS	Elementary	EE - 05	No	30.3%	B	89	A	91	B	80	B	82	B	83
LONGS CREEK	Elementary	EE - 05	No	40.0%	A	91	A	91	B	82	B	85	A	92
MONTGOMERY	Elementary	EE - 05	No	90.3%	F	56	F	55	F	58	F	57	F	51
NEISD - PK4SA	Elementary	PK - PK	No	72.9%	B	89	N/R	N/R	N/R	N/R	N/R	N/R	N/R	N/R
NORTHERN HILLS	Elementary	PK - 05	No	69.2%	C	72	D	69	C	72	D	69	C	71
NORTHWOOD	Elementary	KG - 05	No	51.5%	B	83	B	85	C	70	B	84	C	77
OAK GROVE	Elementary	EE - 05	No	80.6%	D	60	D	64	F	56	D	69	F	39
OAK MEADOW	Elementary	EE - 05	No	38.9%	B	88	B	89	B	80	B	82	B	86
OLMOS	Elementary	PK - 05	No	94.7%	A	92	B	82	B	86	A	90	A	96
REDLAND OAKS	Elementary	EE - 05	No	38.5%	B	88	B	89	C	77	B	82	B	87
REGENCY PLACE	Elementary	KG - 05	No	77.1%	C	72	C	70	D	62	C	74	D	66
RIDGEVIEW	Elementary	EE - 05	No	88.8%	B	82	C	75	D	67	B	84	C	76
ROAN FOREST	Elementary	PK - 05	No	34.0%	A	94	A	92	B	83	B	89	A	100
ROYAL RIDGE	Elementary	PK - 05	No	60.9%	C	78	C	70	C	79	D	66	C	75
SERNA	Elementary	EE - 05	No	89.3%	C	72	F	59	C	72	D	63	C	71
STAHL	Elementary	KG - 05	No	71.2%	C	70	D	67	C	70	D	69	C	70
STEUBING RANCH	Elementary	EE - 05	No	50.2%	C	79	B	80	C	70	B	80	C	78
STONE OAK	Elementary	EE - 05	No	28.5%	B	87	A	91	C	72	B	83	C	78
THOUSAND OAKS	Elementary	KG - 05	No	46.7%	C	79	C	76	B	80	C	70	C	78
TUSCANY HEIGHTS	Elementary	KG - 05	No	15.0%	B	89	A	91	B	85	C	72	B	85
VINEYARD RANCH	Elementary	PK - 05	No	14.9%	A	91	A	92	B	85	B	80	B	89
WALZEM	Elementary	PK - 05	No	90.1%	C	76	D	62	C	77	D	69	C	72
WEST AVENUE	Elementary	PK - 05	No	92.8%	B	81	F	58	B	85	D	62	C	72
WETMORE	Elementary	EE - 05	No	46.6%	C	73	C	75	C	72	D	69	D	69
WILDERNESS OAK	Elementary	KG - 05	No	11.6%	A	96	A	94	A	91	B	85	A	100
WILSHIRE	Elementary	EE - 05	No	88.1%	B	80	C	72	C	79	B	81	C	77
WINDCREST	Elementary	EE - 05	No	77.0%	C	72	D	65	C	74	D	69	D	67
WOODSTONE	Elementary	EE - 05	No	69.2%	D	65	D	67	D	67	D	67	D	60
ALTER	Middle School	06 - 08	No	81.3%	N/R	N/R	N/R	N/R	N/R	N/R	N/R	N/R	N/R	N/R
BRADLEY	Middle School	06 - 08	No	36.2%	B	85	B	88	C	72	B	82	C	79
BUSH	Middle School	06 - 08	No	18.0%	A	95	A	93	B	85	B	83	A	100
DRISCOLL	Middle School	06 - 08	No	46.1%	C	77	C	78	C	70	C	74	C	74
EISENHOWER	Middle School	06 - 08	No	57.1%	C	76	C	75	C	72	C	77	C	73
GARNER	Middle School	06 - 08	No	75.7%	B	82	C	76	C	75	B	85	C	75
HARRIS	Middle School	06 - 08	No	49.5%	B	81	B	82	C	70	B	81	C	77
HILL	Middle School	06 - 08	No	20.8%	A	90	A	91	C	79	C	79	B	87
JACKSON	Middle School	06 - 08	No	71.6%	B	85	C	77	C	77	B	85	B	85
KRUEGER	Middle School	06 - 08	No	75.5%	B	82	C	77	C	72	B	86	C	74
LOPEZ	Middle School	06 - 08	No	11.1%	A	96	A	94	B	85	B	84	A	100

2019 A-F Accountability Listing

NORTHEAST ISD

District / Campus Name	School Type	Grades Served	Ed	Eco Dis	Overall		Student Achievement		School Progress		Closing the Gaps			
					Rating	Score	Rating	Score	Academic Rating	Growth Score	Relative Rating	Performance Score	Rating	Score
NIMITZ	Middle School	06 - 08	No	73.6%	C	76	C	75	F	59	B	82	D	63
TEJEDA	Middle School	06 - 08	No	21.9%	A	93	A	92	B	84	B	83	A	94
WHITE	Middle School	06 - 08	No	68.8%	B	80	C	75	D	63	B	82	C	74
WOOD	Middle School	06 - 08	No	66.5%	D	67	C	71	F	59	C	72	F	56
ACADEMY OF CREATIVE ED	High School	10 - 12	Yes	38.5%	A	91	A	90	N/R		N/R		N/R	
ALTER	High School	09 - 12	No	73.7%	N/R		N/R		N/R		N/R		N/R	
CHURCHILL	High School	09 - 12	No	37.8%	B	86	A	90	C	70	B	84	C	75
HOMEBASED COMP ED	High School	10 - 11	No	50.0%	N/R		N/R		N/R		N/R		N/R	
INTERNATIONAL SCHOOL OF AMERICA	High School	09 - 12	No	22.7%	A	97	A	96	B	82	A	90	A	100
JOHNSON	High School	09 - 12	No	17.5%	A	93	A	95	B	86	B	86	B	87
LEGACY OF EDUCATIONAL EXCELLENCE	High School	09 - 12	No	64.1%	B	82	C	77	B	80	B	82	B	82
MACARTHUR	High School	09 - 12	No	49.1%	B	82	B	81	B	80	B	81	B	83
MADISON	High School	09 - 12	No	45.8%	B	84	B	85	C	76	B	81	B	83
REAGAN	High School	09 - 12	No	13.4%	A	93	A	95	B	85	B	84	B	89
ROOSEVELT	High School	09 - 12	No	66.2%	C	79	C	76	D	68	B	82	C	73
NORTH EAST JJAEP	Elem/Secondary	06 - 11	No	17.6%	N/R		N/R		N/R		N/R		N/R	



NORTHSIDE ISD

Total Student Enrollment: **105,797**
Schools: **120**

ADDRESS: 5900 EVERS RD, SAN ANTONIO, TX, 78238
SUPERINTENDENT: DR BRIAN T WOODS
PHONE (210) 397-8500 / <http://www.nisd.net>

DISTRICT GRADE

B

Score is 87 out of 100

**STUDENT
ACHIEVEMENT**

87

Score is 87 out of 100

**SCHOOL
PROGRESS**

86

Score is 86 out of 100

**CLOSING
THE GAPS**

88

Score is 88 out of 100

How many students
in this district
graduate on time?

90

Score is 90 out of 100

How well did
students perform on
the STARR test?

83

Score is 83 out of 100

How much did this
district receive and
spend per student?

PER STUDENT REVENUE
\$11,344
STATE AVERAGE \$11,729

PER STUDENT EXPENDITURE
\$12,117
STATE AVERAGE \$13,054

2019 A-F Accountability Listing

NORTHSIDE ISD

District / Campus Name	School Type	Grades Served	Overall				Student Achievement		School Progress				Closing the Gaps	
			Ed	Eco Dis	Rating	Score	Rating	Score	Academic Rating	Growth Score	Relative Rating	Performance Score	Rating	Score
NORTHSIDE ISD			No	49.5%	B	87	B	87	C	79	B	86	B	88
ADAMS HILL	Elementary	EE - 05	No	81.8%	C	76	D	69	C	77	C	74	C	75
ALLEN	Elementary	EE - 05	No	93.0%	B	88	C	75	A	91	B	84	B	81
AUE	Elementary	EE - 05	No	11.6%	A	93	A	91	B	82	C	70	A	98
BEARD	Elementary	EE - 05	No	10.0%	A	95	A	93	B	85	C	77	A	100
BEHLAU	Elementary	EE - 05	No	44.6%	C	75	C	74	C	74	D	65	C	78
BLATTMAN	Elementary	EE - 05	No	9.9%	A	95	A	93	B	89	C	79	A	100
BOLDT	Elementary	EE - 05	No	22.6%	B	84	B	82	C	74	D	60	B	88
BOONE	Elementary	EE - 05	No	71.3%	C	78	D	67	B	80	D	69	C	73
BRAUCHLE	Elementary	EE - 05	No	64.9%	B	86	B	80	B	83	B	85	B	88
BRAUN STATION	Elementary	EE - 05	No	36.3%	B	86	C	78	B	80	D	69	A	100
BURKE	Elementary	EE - 05	No	72.6%	A	93	A	91	B	89	A	92	A	96
CABLE	Elementary	EE - 05	No	95.6%	C	76	F	58	C	77	D	63	C	72
CARLOS COON	Elementary	EE - 05	No	77.0%	D	68	D	64	D	67	D	66	D	69
CARNAHAN	Elementary	EE - 05	No	64.2%	C	70	C	71	D	69	C	70	D	67
CARSON	Elementary	EE - 05	No	35.0%	A	93	B	89	A	90	B	80	A	100
CODY	Elementary	EE - 05	No	78.8%	C	76	D	67	C	77	C	70	C	73
COLE	Elementary	EE - 05	No	26.6%	A	92	A	91	A	90	B	80	A	94
COLONIES NORTH	Elementary	EE - 05	No	75.0%	B	80	D	69	B	82	C	70	C	75
DRIGGERS	Elementary	EE - 05	No	77.0%	B	80	C	74	B	80	B	81	C	79
ELLISON	Elementary	EE - 05	No	24.5%	A	90	B	89	B	82	C	72	A	92
ELROD	Elementary	EE - 05	No	52.2%	C	75	C	74	C	72	C	70	C	78
ESPARZA	Elementary	PK - 05	No	74.6%	D	66	D	65	D	62	D	67	D	63
EVERS	Elementary	EE - 05	No	49.9%	C	73	C	73	C	72	D	67	C	74
FERNANDEZ	Elementary	EE - 05	No	55.4%	A	92	A	90	A	91	B	88	A	94
FIELDS	Elementary	EE - 05	No	44.5%	A	90	B	85	B	88	B	81	A	94
FISHER	Elementary	EE - 05	No	68.1%	B	85	C	77	B	83	B	82	B	89
FORESTER	Elementary	EE - 05	No	52.4%	B	86	C	79	B	83	B	80	A	92
FRANKLIN	Elementary	EE - 05	No	33.4%	B	86	B	88	C	77	C	78	B	81
GALM	Elementary	EE - 05	No	47.6%	C	79	C	77	C	77	C	74	B	84
GLASS	Elementary	EE - 05	No	77.4%	C	78	C	71	C	79	C	75	C	74
GLENN	Elementary	EE - 05	No	92.8%	D	69	D	60	D	69	D	67	D	69
GLENOAKS	Elementary	EE - 05	No	77.5%	B	80	C	73	C	74	B	80	C	79
HATCHETT	Elementary	EE - 05	No	68.5%	C	74	C	72	D	62	C	75	C	72
HELOTES	Elementary	KG - 05	No	21.6%	A	92	A	90	B	88	C	73	A	96
HENDERSON	Elementary	EE - 05	No	31.0%	A	91	B	88	B	85	C	75	A	98
HOFFMANN	Elementary	EE - 05	No	23.9%	B	81	C	79	C	79	F	58	B	87
HOWSMAN	Elementary	EE - 05	No	67.2%	C	74	C	72	D	69	C	75	C	71
HULL	Elementary	EE - 05	No	92.8%	C	73	F	57	C	75	D	60	D	69
KALLISON	Elementary	EE - 05	No	25.0%	A	90	B	86	B	82	D	69	A	98
KNOWLTON	Elementary	EE - 05	No	78.4%	B	88	C	77	B	88	B	84	B	89
KRUEGER	Elementary	EE - 05	No	26.9%	A	90	A	91	C	79	C	79	B	87
KUENTZ	Elementary	EE - 05	No	21.5%	A	93	A	90	C	79	C	72	A	100
LANGLEY	Elementary	EE - 05	No	31.7%	B	88	B	86	B	80	C	75	A	92
LEON SPRINGS	Elementary	EE - 05	No	15.0%	A	95	A	93	A	93	B	82	A	100
LEON VALLEY	Elementary	EE - 05	No	76.3%	B	82	C	74	B	83	B	81	C	79
LEWIS	Elementary	EE - 05	No	42.5%	B	85	B	80	B	83	C	75	B	88
LIECK	Elementary	EE - 05	No	37.9%	C	78	C	79	C	72	C	70	C	77
LINTON	Elementary	EE - 05	No	85.0%	B	86	C	77	B	85	B	85	B	89
LOCKE HILL	Elementary	EE - 05	No	56.8%	C	77	C	77	D	69	C	78	C	73
LOS REYES	Elementary	EE - 05	No	20.5%	A	92	A	92	B	86	B	82	A	92
MARTIN	Elementary	EE - 05	No	90.2%	C	72	F	57	C	72	D	60	C	71
MAY	Elementary	EE - 05	No	38.3%	C	76	C	77	D	69	D	69	C	72
MCANDREW	Elementary	KG - 05	No	7.8%	A	96	A	94	B	89	B	82	A	100
MODERMOTT	Elementary	EE - 05	No	73.7%	C	71	C	70	F	59	C	72	D	68
MEAD	Elementary	EE - 05	No	89.9%	C	77	D	69	C	77	C	75	C	77

2019 A-F Accountability Listing

NORTHSIDE ISD

District / Campus Name	School Type	Grades Served	School Progress													
			Overall				Student Achievement		Academic		Growth		Relative Performance		Closing the Gaps	
			Ed	Eco	Dis	Rating	Score	Rating	Score	Rating	Score	Rating	Score	Rating	Score	
MEADOW VILLAGE	Elementary	EE - 05	No	88.1%	C	74	F	59	C	75	D	63	C	71		
MICHAEL	Elementary	EE - 05	No	72.6%	C	78	D	64	B	80	D	63	C	73		
MIRELES	Elementary	EE - 05	No	21.2%	A	91	B	89	C	75	C	70	A	94		
MORA	Elementary	EE - 05	No	42.6%	C	74	C	74	C	70	D	62	C	75		
MURNIN	Elementary	EE - 05	No	61.8%	B	80	C	76	C	74	C	79	B	83		
MYERS	Elementary	EE - 05	No	71.5%	C	75	C	72	C	70	C	75	C	74		
NICHOLS	Elementary	EE - 05	No	42.9%	B	84	B	82	B	80	C	77	A	90		
NISD PKSA	Elementary	PK - PK	No	68.6%	B	87	N/R		N/R		N/R		N/R			
NORTHWEST CROSSING	Elementary	EE - 05	No	59.8%	B	81	C	76	C	79	C	77	B	87		
OAK HILLS TERRACE	Elementary	EE - 05	No	74.4%	D	66	F	57	D	67	F	57	D	62		
OTT	Elementary	EE - 05	No	42.8%	C	73	C	74	D	67	D	62	C	70		
PASSMORE	Elementary	EE - 05	No	91.0%	C	72	D	65	C	70	C	72	C	72		
POWELL	Elementary	EE - 05	No	76.6%	C	79	C	73	C	72	B	80	C	76		
PUPIL PERSONNEL CAMPUS	Elementary	PK - 05	No	58.3%	N/R		N/R		N/R		N/R		N/R			
RABA	Elementary	EE - 05	No	44.2%	A	94	A	90	A	91	B	85	A	100		
RHODES	Elementary	EE - 05	No	64.8%	C	79	C	73	B	80	C	75	C	77		
SCARBOROUGH	Elementary	EE - 05	No	33.8%	B	85	B	86	B	80	C	76	B	83		
SCOBEE	Elementary	EE - 05	No	41.8%	A	92	B	88	B	89	B	82	A	100		
STUEBING	Elementary	EE - 05	No	30.7%	A	90	A	90	B	82	B	80	A	90		
THORNTON	Elementary	EE - 05	No	47.7%	C	78	C	77	C	72	C	72	C	79		
TIMBERWILDE	Elementary	EE - 05	No	66.3%	C	78	C	76	C	72	B	80	C	72		
VALLEY HI	Elementary	EE - 05	No	76.4%	B	85	C	77	B	80	B	85	B	85		
VILLARREAL	Elementary	EE - 05	No	82.1%	D	65	D	64	D	60	D	69	F	55		
WANKE	Elementary	EE - 05	No	40.0%	C	79	C	77	C	79	D	69	C	78		
WARD	Elementary	EE - 05	No	52.3%	B	84	B	80	C	77	B	81	A	90		
WESTWOOD TERRACE	Elementary	EE - 05	No	93.0%	C	79	C	72	C	79	B	80	C	75		
ALTERNATIVE	Middle School	43624	No	82.1%	N/R		N/R		N/R		N/R		N/R			
BERNAL	Middle School	43624	No	30.1%	B	89	A	90	C	79	B	81	B	88		
BRISCOE	Middle School	43624	No	21.8%	B	86	B	89	D	69	C	70	B	80		
CONNALLY	Middle School	43624	No	48.2%	B	82	B	83	D	69	B	82	C	78		
FOLKS	Middle School	43624	No	27.6%	B	86	B	89	D	69	C	77	C	79		
GARCIA	Middle School	43624	No	11.1%	A	92	A	93	B	83	B	81	A	90		
HOBBY	Middle School	43624	No	63.5%	B	86	B	82	C	74	B	88	B	81		
JEFFERSON	Middle School	43624	No	34.2%	B	86	B	87	C	72	B	80	B	83		
JONES	Middle School	43624	No	89.9%	D	66	D	65	F	57	C	75	F	45		
JORDAN	Middle School	43624	No	52.6%	C	79	C	79	D	63	B	80	C	77		
LUNA	Middle School	43624	No	40.9%	C	78	C	78	D	66	D	69	C	79		
NEFF	Middle School	43624	No	77.9%	B	80	C	74	C	72	B	82	C	74		
PEASE	Middle School	43624	No	75.9%	C	76	C	73	F	59	B	81	D	63		
RAWLINSON	Middle School	43624	No	30.5%	B	87	B	88	C	79	C	79	B	84		
RAYBURN	Middle School	43624	No	80.6%	C	74	C	70	F	59	C	79	D	62		
ROSS	Middle School	43624	No	84.5%	B	81	C	75	F	59	B	85	C	71		
RUDDER	Middle School	43624	No	68.9%	C	76	C	74	F	59	B	80	D	67		
STEVENSON	Middle School	43624	No	39.5%	C	79	B	81	D	60	C	72	C	74		
STINSON	Middle School	43624	No	40.2%	B	82	B	83	D	66	C	77	C	79		
VALE	Middle School	43624	No	48.5%	C	74	C	76	D	63	C	70	C	70		
ZACHRY	Middle School	43624	No	71.0%	C	78	C	75	F	58	B	81	C	70		
ALTERNATIVE	High School	43720	No	72.5%	N/R		N/R		N/R		N/R		N/R			
BRANDEIS	High School	43720	No	23.5%	A	90	A	93	B	83	B	84	B	84		
BRENNAN	High School	43720	No	34.6%	A	90	A	91	B	87	B	81	B	88		
CHAVEZ EXCEL ACADEMY	High School	43811	Yes	36.0%	N/R		N/R		N/R		N/R		N/R			
CLARK	High School	43720	No	32.7%	A	90	A	91	B	82	B	83	B	86		
HARLAN	High School	43720	No	29.4%	A	93	A	91	B	87	B	82	A	96		
HEALTH CAREERS	High School	43720	No	22.0%	A	99	A	99	A	91	A	97	A	100		
HOLMES	High School	43720	No	76.1%	B	83	B	83	B	85	B	83	C	77		
JAY	High School	43720	No	75.3%	C	78	C	75	D	68	B	81	C	71		
MARSHALL	High School	43720	No	46.9%	B	86	B	87	B	84	B	82	B	83		
NISD BEXAR COUNTY JJA	High School	43658	No	47.4%	N/R		N/R		N/R		N/R		N/R			
O'CONNOR	High School	43720	No	23.3%	A	91	A	93	B	89	B	82	B	86		
STEVENS	High School	43720	No	50.1%	C	79	B	81	C	75	C	77	C	75		
TAFT	High School	43720	No	38.1%	A	90	A	91	C	79	B	83	B	86		
WARREN	High School	43720	No	42.2%	B	89	A	90	B	86	B	85	B	88		
DAEP AT HOLMGREEN	Elem/Secondary	43475	No	72.7%	N/R		N/R		N/R		N/R		N/R			
HOLMGREEN CENTER	Elem/Secondary	43508	No	38.6%	N/R		N/R		N/R		N/R		N/R			
REDDIX CENTER	Elem/Secondary	EE - 12	Yes	36.9%	N/R		N/R		N/R		N/R		N/R			



RANDOLPH FIELD ISD

Total Student Enrollment: **1,467**
Schools: **3**

ADDRESS: P.O. BOX 2217, UNIVERSAL CITY, TX, 78148
SUPERINTENDENT: MR. JEREMY L. JOHNSON
PHONE (210) 357-2377/<https://www.rfisd.net>

DISTRICT GRADE

A

Score is 97 out of 100

STUDENT ACHIEVEMENT

95

Score is 95 out of 100

How many students in this district graduate on time?

100

Score is 100 out of 100

SCHOOL PROGRESS

89

Score is 89 out of 100

How well did students perform on the STARR test?

92

Score is 92 out of 100

CLOSING THE GAPS

100

Score is 100 out of 100

How much did this district receive and spend per student?

PER STUDENT REVENUE
\$13,776
STATE AVERAGE \$11,729

PER STUDENT EXPENDITURE
\$13,235
STATE AVERAGE \$13,054

2019 A-F Accountability Listing

RANDOLF FIELD ISD

District / Campus Name	School Type	Grades Served	Overall		Student Achievement		School Progress				Closing the Gaps			
			Ed	Eco Dis	Rating	Score	Rating	Score	Academic Rating	Growth Score	Relative Performance Rating	Performance Score	Rating	Score
RANDOLF FIELD ISD			No	7.4%	A	97	A	95	B	89	B	81	A	100
RANDOLPH	Elementary	EE - 05	No	9.1%	A	95	A	93	A	91	B	81	A	100
RANDOLPH	Middle School	06 - 08	No	7.6%	A	92	A	91	B	83	F	59	A	93
RANDOLPH	High School	09 - 12	No	5.0%	A	92	A	95	C	70	C	75	B	84



SAN ANTONIO ISD

Total Student Enrollment: **48,720**
Schools: **100**

ADDRESS: 141 LAVACA ST, SAN ANTONIO, TX, 78210
SUPERINTENDENT: PEDRO MARTINEZ
PHONE: (210) 554-2200/http://www.saisd.net/main

DISTRICT GRADE

B

Score is 83 out of 100

STUDENT ACHIEVEMENT

73

Score is 73 out of 100

SCHOOL PROGRESS

87

Score is 87 out of 100

CLOSING THE GAPS

73

Score is 73 out of 100

How many students in this district graduate on time?

60

Score is 60 out of 100

How well did students perform on the STARR test?

62

Score is 62 out of 100

How much did this district receive and spend per student?

PER STUDENT REVENUE
\$13,254
STATE AVERAGE \$11,729

PER STUDENT EXPENDITURE
\$13,895
STATE AVERAGE \$13,054

2019 A-F Accountability Listing

SAN ANTONIO ISD

District / Campus Name	School Type	Grades Served	Overall		Student Achievement		School Progress		Closing the Gaps					
			Ed	Eco Dis	Rating	Score	Rating	Score	Rating	Score	Rating	Score		
SAN ANTONIO ISD			No	90.4%	B	83	C	73	C	70	B	87	C	73
AGNES COTTON ACADEMY	Elementary	PK - 08	No	94.6%	B	80	C	72	C	79	B	81	C	79
ARNOLD	Elementary	PK - 05	No	92.5%	C	77	C	70	C	74	C	77	C	77
BASKIN	Elementary	PK - 05	No	86.6%	B	80	C	75	D	60	B	83	C	72
BEACON HILL ACADEMY	Elementary	PK - 08	No	91.8%	F	59	F	58	F	58	D	62	F	51
BONHAM ACADEMY	Elementary	KG - 08	No	62.4%	D	69	D	69	F	59	D	65	C	70
BOWDEN ACADEMY	Elementary	EE - 08	No	94.0%	F	51	F	53	F	58	F	55	F	35
BRISCOE	Elementary	EE - 05	No	91.4%	C	79	D	62	B	82	D	69	C	73
CAMERON	Elementary	EE - 05	No	96.0%	C	76	F	59	C	77	D	66	C	75
CARROLL EARLY CHILDHOOD CAMPUS	Elementary	EE - 01	No	100.0%	B	82	N/R		N/R		N/R		N/R	
CARVAJAL EARLY CHILDHOOD CAMPUS	Elementary	PK - PK	No	100.0%	C	79	N/R				N/R		N/R	
CHARLES C BALL ACADEMY	Elementary	EE - 08	No	96.6%	D	66	F	59	F	57	D	66	D	65
CHARLES GRAEBNER	Elementary	PK - 05	No	95.6%	B	83	C	70	B	85	C	78	C	78
CHILDREN'S SHELTER OF SA	Elementary	PK - 05	No	82.8%	N/R		N/R		N/R		N/R		N/R	
COLLINS GARDEN	Elementary	PK - 05	No	94.1%	C	75	D	62	C	75	C	70	C	74
DAVID BARKLEY/FRANCISCO RUIZ	Elementary	PK - 06	No	95.6%	C	79	D	62	B	82	C	79	C	73
DAVID CROCKETT ACADEMY	Elementary	PK - 07	No	97.9%	D	68	F	58	D	69	D	63	D	67
DE ZAVALA	Elementary	EE - 06	No	98.0%	C	72	F	57	C	72	D	60	C	71
DORIE MILLER	Elementary	PK - 05	No	95.1%	C	77	D	67	C	79	C	75	C	73
DOUGLASS ACADEMY	Elementary	PK - 07	No	96.8%	F	54	F	56	F	56	F	58	F	43
ELOISE JAPHET ACADEMY	Elementary	PK - 08	No	90.8%	D	67	D	62	D	67	D	69	D	62
FENWICK ACADEMY	Elementary	PK - 07	No	95.9%	D	62	F	57	F	59	D	60	D	65
FOSTER ACADEMY	Elementary	EE - 08	No	94.9%	D	66	F	58	D	67	D	63	D	65
FRANKLIN	Elementary	PK - 05	No	92.8%	B	82	C	75	D	67	B	84	C	78
GATES	Elementary	PK - 06	No	97.2%	B	82	C	74	B	80	B	84	C	77
GEORGE E KELLY	Elementary	PK - 05	No	94.8%	B	86	C	70	A	90	C	78	C	76
GONZALES EARLY CHILDHOOD CAMPUS	Elementary	PK - PK	No	86.7%	D	65	N/R		N/R		N/R		N/R	
HAWTHORNE PK-8 ACADEMY	Elementary	KG - 08	No	76.7%	D	65	D	64	D	62	D	66	D	62
HEALY MURPHY PK	Elementary	PK - PK	No	100.0%	D	67	N/R		N/R		N/R		N/R	
HERFF ACADEMY	Elementary	PK - 07	No	97.3%	F	48	F	54	F	55	F	56	F	30
HIGHLAND HILLS	Elementary	PK - 05	No	92.2%	B	88	C	74	A	91	B	83	B	82
HIGHLAND PARK	Elementary	PK - 05	No	93.2%	A	90	C	79	B	89	B	89	A	92
HILLCREST	Elementary	PK - 05	No	97.4%	C	78	D	60	B	80	D	69	C	74
HIRSCH	Elementary	PK - 05	No	95.2%	D	68	F	54	C	70	F	56	D	63
HUPPERTZ	Elementary	PK - 05	No	96.5%	F	49	F	53	F	57	F	55	F	30
IRVING DUAL LANGUAGE ACADEMY	Elementary	PK - 02	No	92.7%	C	78	N/R		N/R		N/R		N/R	
J T BRACKENRIDGE	Elementary	PK - 06	No	99.4%	F	54	F	56	F	57	F	58	F	43
JT BRACKENRIDGE DAEP	Elementary	03 - 04	No	100.0%	N/R		N/R		N/R		N/R		N/R	
KNOX EARLY CHILDHOOD CAMPUS	Elementary	EE - PK	No	100.0%	B	83	N/R		N/R		N/R		N/R	
LAMAR	Elementary	PK - 06	No	68.6%	D	67	D	69	D	67	D	69	D	62
M L KING ACADEMY	Elementary	KG - 08	No	97.6%	B	81	D	60	B	83	D	69	C	75
MADISON	Elementary	PK - 05	No	94.8%	C	70	D	62	C	72	C	70	D	65
MARGIL ACADEMY	Elementary	PK - 07	No	99.4%	C	70	D	64	D	69	C	72	D	65
MARK TWAIN DUAL LANGUAGE ACADEMY	Elementary	PK - 04	No	69.1%	A	94	A	92	B	82	A	92	A	100
MAVERICK	Elementary	EE - 05	No	89.9%	D	68	D	62	D	62	D	69	D	66
MISSION ACADEMY	Elementary	PK - 08	No	88.0%	B	80	C	73	C	77	B	81	C	78
MURIEL FORBES ACADEMY	Elementary	PK - 08	No	93.0%	C	78	C	71	C	70	C	79	C	74
NEAL	Elementary	PK - 05	No	96.2%	C	78	C	71	C	74	C	79	C	76
NELSON EARLY CHILDHOOD CAMPUS	Elementary	EE - PK	No	99.5%	D	62	N/R		N/R		N/R		N/R	
OGDEN ACADEMY	Elementary	PK - 07	No	96.9%	F	55	F	52	F	58	F	54	F	48
P F STEWART	Elementary	PK - 05	No	95.4%	D	61	F	51	D	60	F	53	D	64

2019 A-F Accountability Listing

SAN ANTONIO ISD

District / Campus Name	School Type	Grades Served	Ed	Eco Dis	Overall		Student Achievement		School Progress				Closing the Gaps	
					Rating	Score	Rating	Score	Academic Rating	Growth Score	Relative Rating	Performance Score	Rating	Score
PERSHING	Elementary	PK - 06	No	98.2%	C	70	F	52	C	72	F	54	D	66
RIVERSIDE PARK ACADEMY	Elementary	PK - 07	No	96.7%	D	69	D	64	D	62	C	72	D	63
ROBERT B GREEN ACADEMY	Elementary	KG - 07	No	90.7%	D	64	F	58	D	65	D	62	D	63
RODRIGUEZ	Elementary	PK - 05	No	97.8%	D	68	F	54	D	69	F	56	D	65
ROGERS ACADEMY	Elementary	PK - 08	No	91.2%	D	64	F	59	F	57	D	65	D	62
SAISD - PK 4 SA	Elementary	PK - PK	No	96.0%	B	80	N/R		N/R		N/R		N/R	
SARAH S KING	Elementary	EE - 05	No	97.8%	C	71	F	57	C	70	D	60	C	72
SCHENCK	Elementary	EE - 05	No	89.7%	A	92	C	79	B	88	B	88	A	100
SMITH	Elementary	EE - 05	No	95.0%	F	56	F	57	F	58	D	60	F	46
STEELE MONTESSORI ACADEMY	Elementary	EE - 02	No	62.0%	D	67	N/R		N/R		N/R		N/R	
STORM	Elementary	PK - 05	No	98.7%	F	47	F	45	F	54	F	46	F	30
TYNAN EARLY CHILDHOOD CAMPUS	Elementary	PK - PK	No	100.0%	A	92	N/R		N/R		N/R		N/R	
WASHINGTON	Elementary	PK - 06	No	99.2%	C	79	D	69	B	80	C	77	C	76
WILSON	Elementary	PK - 05	No	93.0%	C	75	C	70	D	65	C	77	C	71
WOODLAWN ACADEMY	Elementary	KG - 08	No	84.9%	D	69	D	64	D	69	D	69	C	70
WOODLAWN HILLS	Elementary	PK - 05	No	95.0%	D	64	F	56	D	65	F	58	D	63
DAVIS	Middle School	06 - 08	No	95.0%	D	67	F	57	D	69	D	66	D	63
HARRIS	Middle School	06 - 08	No	90.8%	F	55	F	58	F	56	D	66	F	30
IRVING	Middle School	08 - 08	No	96.7%	A	90	C	74	A	93	B	86	B	82
LONGFELLOW	Middle School	06 - 08	No	90.8%	F	59	F	59	F	59	D	69	F	50
LOWELL	Middle School	06 - 08	No	98.4%	F	54	F	54	F	58	F	59	F	42
PAGE	Middle School	08 - 08	No	97.4%	B	81	F	49	B	85	F	52	C	70
POE	Middle School	06 - 08	No	95.8%	D	65	F	56	F	58	D	63	C	71
RHODES	Middle School	06 - 08	No	95.5%	C	71	D	62	F	58	C	74	D	65
ROGERS	Middle School	06 - 08	No	92.0%	F	57	F	53	F	56	F	57	F	56
TAFOLLA	Middle School	07 - 08	No	95.1%	C	77	F	54	C	79	F	59	C	72
WHITTIER	Middle School	06 - 08	No	92.8%	B	82	C	73	D	69	B	84	C	76
BRACKENRIDGE	High School	09 - 12	No	86.8%	B	81	C	78	B	83	B	83	C	77
BREWER ACADEMY	High School	07 - 12	Yes	95.8%	F	56	F	45	F	52	N/R		N/R	
BURBANK	High School	09 - 12	No	89.7%	C	79	C	77	D	69	B	83	C	70
CAST TECH	High School	09 - 10	No	56.3%	B	84	B	82	C	75	B	85	B	81
COOPER ACADEMY AT NAVARRO	High School	09 - 12	Yes	93.4%	F	58	C	70	N/R		N/R		F	30
EDISON	High School	09 - 12	No	91.4%	C	79	B	80	D	69	B	83	C	71
FOX TECHNICAL	High School	09 - 12	No	79.2%	A	92	A	94	B	86	A	93	B	87
HEALY-MURPHY	High School	09 - 12	Yes	98.3%	D	65	C	76	F	45	N/R		F	30
HIGHLANDS	High School	09 - 12	No	90.7%	C	79	C	73	C	73	B	82	C	73
HOUSTON	High School	09 - 12	No	91.4%	C	72	D	65	D	63	C	73	C	71
JEFFERSON	High School	09 - 12	No	82.8%	C	79	C	72	B	81	C	79	C	73
JJA	High School	07 - 11	No	90.0%	N/R		N/R		N/R		N/R		N/R	
LANIER	High School	09 - 12	No	96.0%	C	76	C	70	C	72	C	79	C	70
ST PHILIP'S COLLEGE EARLY COLLEGE	High School	09 - 12	No	89.9%	A	96	A	93	B	88	A	94	A	100
TEXANS CAN ACADEMY AT HIGHLANDS	High School	09 - 12	Yes	95.2%	F	50	F	59	F	50	N/R		F	30
TRAVIS EARLY COLLEGE	High School	09 - 12	No	73.2%	A	99	A	98	B	89	A	97	A	100
ADVANCED LEARNING ACADEMY	Elem/Secondary	PK - 12	No	51.0%	B	82	C	79	B	80	B	82	B	82
CHRISTUS SANTA ROSA	Elem/Secondary	04 - 12	Yes	100.0%	N/R		N/R		N/R		N/R		N/R	
ESTRADA ACHIEVEMENT CTR	Elem/Secondary	06 - 12	No	91.3%	N/R		N/R		N/R		N/R		N/R	
JUVENILE DETENT CTR	Elem/Secondary	06 - 12	Yes	10.0%	N/R		N/R		N/R		N/R		N/R	
SEIDEL LEARNING CENTER	Elem/Secondary	06 - 12	Yes	100.0%	N/R		N/R		N/R		N/R		N/R	
YOUNG MEN'S LEADERSHIP ACADEMY	Elem/Secondary	04 - 09	No	59.9%	B	88	B	85	B	84	B	87	A	90
YOUNG WOMEN'S LEADERSHIP ACADEMY	Elem/Secondary	06 - 12	No	54.1%	A	99	A	98	B	82	A	98	A	100



SCHERTZ-CIBOLO ISD

Total Student Enrollment: **15,768**
Schools: **16**

ADDRESS: 1060 ELBEL RD, SCHERTZ, TX, 78154
SUPERINTENDENT: DR GREG GIBSON
PHONE: (210) 945-6235/http://www.scuc.txed.net

DISTRICT GRADE

B

Score is 89 out of 100

STUDENT
ACHIEVEMENT

89

Score is 89 out of 100

How many students
in this district
graduate on time?

95

Score is 95 out of 100

SCHOOL
PROGRESS

82

Score is 82 out of 100

How well did
students perform on
the STARR test?

87

Score is 87 out of 100

CLOSING
THE GAPS

89

Score is 89 out of 100

How much did this
district receive and
spend per student?

PER STUDENT REVENUE
\$9,863
STATE AVERAGE \$11,729

PER STUDENT EXPENDITURE
\$14,541
STATE AVERAGE \$13,054

2019 A-F Accountability Listing

SCHERTZ-CIBOLO ISD

District / Campus Name	School Type	Grades Served	Overall		Student Achievement		School Progress				Closing the Gaps			
			Ed	Eco Dis	Rating	Score	Rating	Score	Academic Rating	Growth Score	Relative Performance Rating	Performance Score	Rating	Score
SCHERTZ-CIBOLO-U CITY ISD			No	29.9%	B	89	B	89	B	82	C	78	B	89
CIBOLO VALLEY	Elementary	EE - 04	No	27.5%	C	75	C	76	D	62	F	57	C	71
GREEN VALLEY	Elementary	EE - 04	No	32.3%	C	73	C	77	F	59	D	62	D	65
JOHN A SIPPEL	Elementary	EE - 04	No	31.2%	D	69	C	74	F	57	F	57	F	56
NORMA J PASCHAL	Elementary	EE - 04	No	23.5%	C	77	C	78	D	69	F	58	C	76
ROSE GARDEN	Elementary	EE - 04	No	47.2%	C	75	C	75	C	75	D	69	C	76
SCHERTZ	Elementary	EE - 04	No	55.8%	D	64	D	65	F	59	F	58	D	62
WATTS	Elementary	EE - 04	No	37.4%	C	79	B	80	D	67	C	72	C	75
WIEDERSTEIN	Elementary	EE - 04	No	30.5%	C	73	C	77	F	54	D	60	D	65
BARBARA JORDAN INT	Middle School	05 - 06	No	25.9%	B	86	B	87	B	80	C	70	B	82
DOBIE	Middle School	07 - 08	No	25.7%	B	89	B	88	B	84	C	72	A	92
ELAINE S SCHLATHER INT	Middle School	05 - 06	No	23.9%	B	85	B	87	C	77	D	69	B	81
LAURA INGALLS WILDER INT	Middle School	05 - 06	No	41.9%	A	90	B	85	B	85	B	82	A	100
RAY D GORBETT	Middle School	07 - 08	No	35.3%	B	88	B	86	B	83	B	80	A	92
ALLISON L STEELE	High School	09 - 12	Yes	37.6%	A	92	B	88	N/R		N/R		N/R	
BYRON P STEELE II	High School	09 - 12	No	21.2%	A	91	A	93	B	87	B	81	B	85
SAMUEL CLEMENS	High School	09 - 12	No	25.2%	B	89	A	90	C	76	C	79	B	86



SEGUIN ISD

Total Student Enrollment: **7,343**
Schools: **14**

ADDRESS: 1221 E KINGSBURY, SEGUIN, TX, 78155
SUPERINTENDENT: DR MATTHEW GUTIERREZ
PHONE (830) 401-8600/http://www.seguin.k12.tx.us

DISTRICT GRADE

C

Score is 72 out of 100

STUDENT ACHIEVEMENT

76

Score is 76 out of 100

SCHOOL PROGRESS

76

Score is 76 out of 100

CLOSING THE GAPS

61

Score is 61 out of 100

How many students in this district graduate on time?

95

Score is 95 out of 100

How well did students perform on the STARR test?

67

Score is 67 out of 100

How much did this district receive and spend per student?

PER STUDENT REVENUE
\$11,212
STATE AVERAGE \$11,729

PER STUDENT EXPENDITURE
\$12,321
STATE AVERAGE \$13,054

2019 A-F Accountability Listing

SEGUIN ISD

District / Campus Name	School Type	Grades Served	Ed	Eco Dis	Overall		Student Achievement		School Progress				Closing the Gaps	
					Rating	Score	Rating	Score	Academic Rating	Growth Score	Relative Rating	Performance Score	Rating	Score
SEGUIN ISD			No	71.0%	C	72	C	76	F	58	C	76	D	61
BALL EARLY CHILDHOOD CENTER	Elementary	EE - PK	No	100.0%	B	80	N/R		N/R		N/R		N/R	
JEFFERSON AVE	Elementary	KG - 05	No	87.9%	C	74	D	62	C	75	D	69	C	72
KOENNECKE	Elementary	KG - 05	No	66.7%	B	80	C	77	C	72	B	81	C	77
MCQUEENEY	Elementary	KG - 05	No	83.4%	B	81	C	77	D	67	B	85	C	72
ORALIA R RODRIGUEZ	Elementary	KG - 05	No	82.2%	D	68	F	57	D	67	F	58	C	70
PATLAN	Elementary	KG - 05	No	82.8%	D	68	D	65	D	67	C	70	D	63
VOGEL	Elementary	KG - 05	No	68.6%	D	61	D	67	F	59	D	66	F	48
WEINERT	Elementary	KG - 05	No	65.7%	C	78	C	76	C	72	B	80	C	73
BRIESEMEISTER	Middle School	43624	No	74.7%	F	53	F	58	F	56	F	59	F	39
JIM BARNES	Middle School	43624	No	62.1%	F	59	C	70	F	56	D	69	F	33
MERCER & BLUMBERG LRN CTR	High School	43750	Yes	79.5%	C	70	B	81	N/R		N/R		F	30
SEGUIN	High School	43720	No	58.4%	C	77	B	81	D	60	B	80	D	66
JUVENILE DETENTION CENTER	Elem/Secondary	43627	Yes	25.0%	N/R		N/R		N/R		N/R		N/R	
LIZZIE M BURGESS ALTERNATIVE SCHOOL	Elem/Secondary	43567	No	85.4%	N/R		N/R		N/R		N/R		N/R	



SOMERSET ISD

Total Student Enrollment: **4,156**
Schools: **7**

ADDRESS: P O BOX 279, SOMERSET, TX, 78069
SUPERINTENDENT: DR SAUL HINOJOSA
PHONE/(210) 750-8955/http://sisdk12.edlioschool.com

DISTRICT GRADE

B

Score is 87 out of 100

**STUDENT
ACHIEVEMENT**

83

Score is 83 out of 100

**SCHOOL
PROGRESS**

91

Score is 91 out of 100

**CLOSING
THE GAPS**

77

Score is 77 out of 100

How many students
in this district
graduate on time?

85

Score is 85 out of 100

How well did
students perform on
the STARR test?

71

Score is 71 out of 100

How much did this
district receive and
spend per student?

PER STUDENT REVENUE
\$11,311
STATE AVERAGE \$11,729

PER STUDENT EXPENDITURE
\$12,790
STATE AVERAGE \$13,054

2019 A-F Accountability Listing

SOMERSET ISD

District/ Campus Name	School Type	Grades Served	Ed No	Eco Dis	Overall		Student Achievement		School Progress		Closing the Gaps			
					Rating	Score	Rating	Score	Academic Rating	Growth Score	Relative Performance Rating	Performance Score	Rating	Score
SOMERSET ISD			No	83.5%	B	87	B	83	D	65	A	91	C	77
S/SGT MICHAEL P BARRERA VETERANS	Elementary	PK - 04	No	86.8%	C	77	C	72	D	67	C	79	C	72
SOMERSET EARLY CHILDHOOD	Elementary	EE - KG	No	93.0%	B	87	N/R		N/R		N/R		N/R	
SOMERSET	Elementary	01 - 04	No	84.1%	B	88	B	80	B	88	B	88	B	87
SAVANNAH HEIGHTS INT	Middle School	05 - 06	No	84.9%	D	69	D	69	F	53	C	79	F	45
SOMERSET	Middle School	07 - 08	No	85.0%	B	80	C	72	B	81	B	82	C	75
SHIRLEEN ZACHARIAS EARLY CLGE	High School	09 - 12	No	70.5%	A	94	A	94	B	80	A	94	N/R	
SOMERSET	High School	08 - 12	No	77.7%	B	82	B	81	C	73	B	86	C	72



SOUTH SAN ANTONIO ISD

ADDRESS: 5622 RAY ELLISON BLVD, SAN ANTONIO, TX, 78242
 SUPERINTENDENT: DR ALEXANDRO M FLORES
 Phone: (210) 977-7000/http://www.southsanisd.net

Total Student Enrollment: **8,934**
 Schools: **14**

DISTRICT GRADE

C

Score is 77 out of 100

STUDENT ACHIEVEMENT

69

Score is 69 out of 100

How many students in this district graduate on time?

65

Score is 65 out of 100

SCHOOL PROGRESS

80

Score is 80 out of 100

How well did students perform on the STARR test?

65

Score is 65 out of 100

CLOSING THE GAPS

71

Score is 71 out of 100

How much did this district receive and spend per student?

PER STUDENT REVENUE
 \$11,816
 STATE AVERAGE \$11,729

PER STUDENT EXPENDITURE
 \$11,317
 STATE AVERAGE \$13,054

2019 A-F Accountability Listing
SOUTH SAN ANTONIO ISD

District / Campus Name	School Type	Grades Served	Overall		Student Achievement		School Progress				Closing the Gaps			
			Ed	Eco Dis	Rating	Score	Rating	Score	Academic Rating	Growth Score	Relative Performance Rating	Performance Score	Rating	Score
SOUTH SAN ANTONIO ISD			No	90.9%	C	77	D	69	D	69	B	80	C	71
FIVE PALMS EL	Elementary	PK - 05	No	93.0%	B	81	D	62	B	85	D	69	C	73
FRANK MADLA EL	Elementary	PK - 05	No	98.2%	F	59	F	56	D	62	F	58	F	52
HUTCHINS EL	Elementary	EE - 05	No	89.5%	D	65	D	60	D	62	D	66	D	63
KINDRED EL	Elementary	PK - 05	No	96.4%	B	81	F	59	B	85	D	66	C	71
MIGUEL CARRILLO JR EL	Elementary	PK - 05	No	95.7%	D	69	F	56	C	70	F	59	D	66
NEIL ARMSTRONG EL	Elementary	EE - 05	No	92.9%	D	63	D	60	F	59	D	67	F	55
PALO ALTO EL	Elementary	EE - 05	No	93.8%	C	79	D	60	B	83	D	67	C	71
PRICE EL	Elementary	PK - 05	No	97.9%	C	74	D	67	D	69	C	75	C	72
ROY BENAVIDEZ EL	Elementary	PK - 05	No	88.9%	C	73	F	58	C	74	D	60	C	72
ALAN B SHEPARD MIDDLE	Middle School	06 - 08	No	91.7%	D	65	D	64	F	59	C	75	F	42
DWIGHT MIDDLE	Middle School	06 - 08	No	87.6%	D	61	D	64	F	57	C	72	F	36
ROBERT C ZAMORA MIDDLE	Middle School	06 - 08	No	89.9%	C	72	D	67	D	66	C	77	D	61
BEXAR CO J J A E P	High School	11 - 11	No	100.0%	N/R		N/R		N/R		N/R		N/R	
SOUTH SAN ANTONIO H S	High School	09 - 12	No	87.1%	C	79	C	74	C	78	B	81	C	74



SOUTHWEST ISD

Total Student Enrollment: **13,733**
Schools: **18**

ADDRESS: 11914 DRAGON LN, SAN ANTONIO, TX, 78252
SUPERINTENDENT: DR LLOYD VERSTUYFT
PHONE: (210) 622-4731/http://www.swisd.net

DISTRICT GRADE

B

Score is 82 out of 100

STUDENT
ACHIEVEMENT

77

Score is 77 out of 100

SCHOOL
PROGRESS

83

Score is 83 out of 100

CLOSING
THE GAPS

81

Score is 81 out of 100

How many students
in this district
graduate on time?

85

Score is 85 out of 100

How well did
students perform on
the STARR test?

73

Score is 73 out of 100

How much did this
district receive and
spend per student?

PER STUDENT REVENUE
\$11,996
STATE AVERAGE \$11,729

PER STUDENT EXPENDITURE
\$12,467
STATE AVERAGE \$13,054

2019 A-F Accountability Listing SOUTHWEST ISD

District / Campus Name	School Type	Grades Served	Overall				Student Achievement		School Progress				Closing the Gaps	
			Ed	Eco Dis	Rating	Score	Rating	Score	Academic Rating	Growth Score	Relative Rating	Performance Score	Rating	Score
SOUTHWEST ISD			No	85.1%	B	82	C	77	D	65	B	83	B	81
BIG COUNTRY EL	Elementary	EE - 05	No	75.7%	A	92	B	83	B	88	B	89	A	100
BOB HOPE EL	Elementary	EE - 05	No	89.2%	B	86	C	73	B	89	B	82	C	78
ELM CREEK EL	Elementary	EE - 05	No	82.3%	B	88	C	78	C	79	B	86	A	92
HIDDEN COVE EL	Elementary	PK - 05	No	98.5%	C	79	D	62	B	80	C	70	C	75
INDIAN CREEK EL	Elementary	EE - 05	No	95.8%	B	80	C	71	B	80	C	79	C	79
KRIEWALD RD EL	Elementary	EE - 05	No	82.1%	B	80	C	75	D	69	B	83	C	74
MEDIO CREEK EL	Elementary	EE - 05	No	89.0%	B	84	C	76	B	83	B	85	B	83
SKY HARBOUR EL	Elementary	EE - 05	No	96.1%	B	82	C	74	C	74	B	83	B	81
SOUTHWEST EL	Elementary	EE - 05	No	77.7%	B	81	C	75	C	75	B	82	C	78
SPICEWOOD PARK EL	Elementary	EE - 05	No	96.9%	D	67	F	58	D	69	D	63	D	61
SUN VALLEY EL	Elementary	EE - 05	No	80.2%	B	81	C	75	C	79	B	82	B	80
FRANCIS R SCOBEE MIDDLE	Middle School	06 - 08	No	73.1%	C	79	C	75	F	58	B	82	C	72
JUDITH A RESNIK MIDDLE	Middle School	06 - 08	No	89.7%	B	80	C	73	D	63	B	83	C	72
RONALD E MCNAIR MIDDLE	Middle School	06 - 08	No	80.4%	C	79	C	74	F	56	B	83	C	71
SHARON CHRISTA MCAULIFFE MIDDLE	Middle School	06 - 08	No	95.0%	F	53	F	56	F	57	D	63	F	30
CAST STEM H S	High School	09 - 09	No	79.0%	B	86	C	77	N/R		B	85	B	87
SOUTHWEST H S	High School	09 - 12	No	74.6%	B	81	B	84	D	68	B	84	C	75
SOUTHWEST LEGACY H S	High School	09 - 12	No	92.1%	C	70	D	62	C	76	C	72	F	56



SAN ANTONIO PRIVATE SCHOOLS

<https://www.sanantoniomag.com/December-2018/2018-19-San-Antonio-Private-School-Guide/>



The Academy at Morgan's Wonderland

5235 David Edwards Drive, 78233 / 210-479-3311 / morganswonderland.academy/ / Year founded: 2011/ Religious Affiliation: None / Total Enrollment: 36 / Co-ed / Grades served: 11-24 years / Uniform? Yes / Annual Tuition: \$14,900 / % of students receiving financial aid: 28% / Student: Teacher Ratio: 5:1 / % Faculty with advanced degree: 75% / Application Deadline: May 1 / One unique offering: Our mission is to provide students with special needs a unique learning environment so they will reach their maximum individual potential.

Antonian College Preparatory High School

6425 West Avenue, 78213 / 210-344-9265 / antonian.org / Year founded: 1964/ Religious Affiliation: Catholic / Total Enrollment: 721 / Co-ed / Grades served: 9-12 / Uniform? Yes / Annual Tuition: \$10,380/ % of students receiving financial aid: 18% / Student: Teacher Ratio: 14:1 / % Faculty with advanced degree: 53.4% / Open House Dates: Tours available daily / Application Deadline: Rolling / One unique offering: High-ranking academic program challenges students in physical, emotional and personal ways and robust extra-curricular program provides students a chance to develop character and leadership skills, spark special interests, and provides for personal growth in areas that interest them.

The Atonement Academy

15415 Red Robin Road, 78255 / 210-944-4093 / school.atonementonline.com / Year founded: 1994/ Religious Affiliation: Catholic / Total Enrollment: 399 / Co-ed / Grades served: PK3-12 / Uniform? Yes / Annual Tuition: \$8,800/ % of students receiving financial aid: 18% / Student: Teacher Ratio: 17:1 / % Faculty with advanced degree: 53.4% / Open House Dates: Feb. 24, March 24, April 14 and May 12 / Application deadline: Rolling / One unique offering: "We are the only Catholic classical education institution in San Antonio, where our students attend daily mass. Within our curriculum, all of our students participate in our music program that includes multiple award-winning choirs.

"Buckner Fanning School at Mission Springs

975 Mission Springs, 78258 / 210-721-4700 / tsams.org / Year founded: 1998/ Religious Affiliation: Non-denominational Christian / Total Enrollment: 140 / Co-ed / Grades served: PK3-12 / Uniform? Yes / Annual Tuition: \$9,399/ % of students receiving financial aid: 12% / Student: Teacher Ratio: 12:1 / % Faculty with advanced degree: 50% / Open House Dates: Jan. 27 / Application Deadline: Rolling / One unique offering: Low student-to-teacher ratios with a rigorous curriculum, which includes STEAM, Core Knowledge and daily Christian education, helping students achieve academic success within an encouraging and positive environment..

Central Catholic High School

1403 N. St. Mary's St., 78215 / 210-225-6794 / cchs-satx.org / Year founded: 1852/ Religious Affiliation: Catholic / Total Enrollment: 606 / Boys / Grades served: 9-12 / Uniform? No / Annual Tuition: \$11,800/ % of students receiving financial aid: 48% / Student: Teacher Ratio: 15:1 / % Faculty with advanced degree: 75% / Application Deadline: Jan. 5 / One unique offering: College preparatory school educating in the Marianist tradition young men from diverse backgrounds for success through the development of scholarship, leadership and moral character.

The Christian School at Castle Hills

2216 NW Military Hwy., 78213 / 210-878-1000 / castlehills.school / Year founded: 1981/ Religious Affiliation: Christian / Total Enrollment: 604 / Co-ed / Grades served: 18 mos.-12th grade/ Uniform? Yes / Annual Tuition: \$8,400/ % of students receiving financial aid: 21% / Student: Teacher Ratio: 8:1 / Open house dates: Jan. 27, Feb. 24, May 5 / Application Deadline: Rolling / Currently, our graduates are dotted around the globe leading and serving their world. Among them are physicians, lawyers, engineers, business leaders and entrepreneurs, pastors, teachers, and missionaries. The biblical worldview and servant leadership principles they were taught at Castle Hills are now influencing their generation.

The Circle School

217 Pershing Ave., 78209 / 210-822-0461 / thecircleschool.org / Year founded: 1965/ Total Enrollment: 90 / Co-ed / Grades served: PK3-8 / Uniform? No / Annual Tuition: \$6,500-\$7,600/ % of students receiving financial aid: 20% / Student: Teacher Ratio: 12:1 / % Faculty with advanced degree: 10% / Open House Dates: Jan. 29 / Application Deadline: Rolling / One unique offering: The school is committed to the development of the whole child through the enrichment of body, mind, heart and spirit.

Concordia Lutheran School

16801 Huebner Road, 78258 / 210-479-1477 / concordia.school / Year founded: 1952/ Religious Affiliation: Lutheran / Total Enrollment: 378 / Co-ed / Grades served: PK-8 / Uniform? Yes / Annual Tuition: \$6,500-\$9,800 / Student: Teacher Ratio: 18:1 / % Faculty with advanced degree: 25% / Open House Dates: Jan. 26 / Application Deadline: Rolling / One unique offering: Concordia is the first SMART Exemplary School in Texas! Our integration of technology to promote positive learning outcomes provides an unmatched student experience.

Cornerstone Christian School

17702 N.W. Military Hwy., 78257/ 210-979-9203 / cornerstonechristianschools.org / Year Founded: 1993 / Religious Affiliation: Christian nondenominational / Co-ed / Grades served: K3-12 / Uniform? Yes / Annual tuition: \$8,379-\$9,428 One Unique Offering: Core classes, athletics, fine arts and technology implemented K4 through 12th grade as well as dual credit and AP courses in high school.

Discovery School of San Antonio

222 Salem, 78201 / 210-344-3472 / mydiscoveryschool.com / Year founded: 1974/ Religious Affiliation: Multi-denominational / Total Enrollment: 178 / Co-ed / Grades served: 2 yrs.-1 / Uniform? No / Annual Tuition: Varies/ % of students receiving financial aid: 10% / Student: Teacher Ratio: 4:1-6:1 / % Faculty with advanced degree: 1% / Open House Dates: Jan. 26 / Application Deadline: September 2019 / One unique offering: We celebrate every child's love for learning through hands-on, developmentally appropriate and meaningful activities.

Eleanor Kolitz Hebrew Language Academy

11327 Dreamland / 210-302-6842 / ekhla.org / Year founded: 2012/ Religious Affiliation: None / Total Enrollment: 355 / Co-ed / Grades served: K-8 / Uniform? Yes / Annual Tuition: None/ Student: Teacher Ratio: 22:1 / % Faculty with advanced degree: 30% / Open House Dates: Every Friday in January and February at 9 a.m. / One unique offering: EKHLA is the only Texas Public Charter School that has a partial immersion Hebrew language focus, and continues to raise the bar by maintaining strong academics, a Core Value Character System and 94 percent of all STAAR tests passed.

First Baptist Academy of Universal City

1401 Pat Booker Road Universal City, 78148 / 210-658-5331 / fbauc.com / Year founded: 1979/ Religious Affiliation: Baptist / Total Enrollment: 342 / Co-ed / Grades served: K3-12 / Uniform? Yes / Annual Tuition: \$1,538-\$5,510/ % of students receiving financial aid: 5% / Student: Teacher Ratio: 12:1 / % Faculty with advanced degree: 65% / Open House Dates: Available by request / Application Deadline: Rolling / One unique offering: We are a well-rounded school with sports and a dual credit program.

Geneva School of Boerne

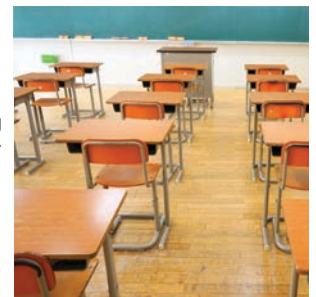
113 Cascade Caverns Road, Boerne, 78015 / 830-755-6101 / genevaschooltx.org / Year founded: 1999/ Religious Affiliation: Independent and interdenominational Christian school/ Total Enrollment: 716 / Co-ed / Grades served: K-12 / Uniform? Yes / Annual Tuition: K-5: \$10,955; 6-8: \$11,325; 9-12: \$11,905/ % of students receiving financial aid: 14% / Student: Teacher Ratio: 11:1 / % Faculty with advanced degree: 33% / Open House Dates: Fridays at 8:15 a.m. on Dec. 7, Jan. 18 and April 5/ Application Deadline: Feb. 1 (for first-round consideration) / One unique offering: K-12 classical and Christian school which strives for excellence in all things to equip students to lead as servants, scholars, athletes and artists to the glory of God.

Hill Country Montessori School

50 Stone Wall Drive, Boerne, 78006 / 830-229-5377 / hcmontessori.org / Year founded: 1981/ Total Enrollment: 80 / Co-ed / Grades served: 18 mos.-8th grade / Uniform? Yes / Annual Tuition: K-5: \$10,600-\$15,700/ % of students receiving financial aid: 5% / Student: Teacher Ratio: 12:1 / Application Deadline: Aug. 1 / One unique offering: Accredited Montessori education.

Holy Cross of San Antonio

426 N. San Felipe Ave., 78228 / 210-433-9395 / holycross-sa.org / Year founded: 1957/ Religious Affiliation: Catholic / Total Enrollment: 280 / Co-ed / Grades served: 6-12 / Uniform? Yes / Annual Tuition: Middle School: \$6,669; High School: \$8,900 / % of students receiving financial aid: 44% / Student: Teacher Ratio: 12:1 / Application Deadline: July 31 / One unique offering: Offer dual-credit program with Our Lady of the Lake, where students take classes on the university's campus and are taught by the university's professors.



Holy Spirit Catholic School

770 W. Ramsey Road, 78216 / 210-349-1169 / hscssa.org / Year founded: 1965/ Religious Affiliation: Catholic / Total Enrollment: 425 / Co-ed / Grades served: PK3-8 / Uniform? Yes / Annual Tuition: \$5,584-\$7,114/ % of students receiving financial aid: 5% / Student: Teacher Ratio: Varies by grade / % Faculty with advanced degree: 33% / Open House Dates: Catholic Schools Week (Jan. 28-Feb. 1) / Application Deadline: Rolling / One unique offering: We are proud of our student and family centered traditions.

Incarnate Word High School

727 E. Hildebrand Ave, 78212 / 210-829-3123 / incarnatewordhs.org / Year founded: 1881/ Religious Affiliation: Catholic / Female / Grades served: 9-12 / Uniform? Yes / Annual Tuition: \$9,800/ Application Deadline: Rolling / One unique offering: Dual credit program with the University of the Incarnate Word.

Keystone School

119 E. Craig Place, 78212 / 210-735-4022 / keystoneschool.org / Year founded: 1948/ Religious Affiliation: None / Total Enrollment: 498 / Co-ed / Grades served: PK3-12 / Uniform? No / Annual Tuition: \$15,060-\$19,355/ % of students receiving financial aid: 15% / Student: Teacher Ratio: 10:1 / % Faculty with advanced degree: 45% / Open House Dates: October 2019 / Application Deadline: Dec. 1 for kindergarten and ninth grades, Feb. 1 for all other grades/ One unique offering: High-level academic program in a warm and caring setting that challenges and supports children and teens to be the best students and the most caring people they can be.

Lutheran High School

18104 Babcock Road, 78255 / 210-694-4962 / lhssa.org / Year founded: 1995/ Religious Affiliation: Lutheran / Total Enrollment: 165 / Co-ed / Grades served: 9-12 / Uniform? Yes / Annual Tuition: \$10,950 / Student: Teacher Ratio: 12:1 / % Faculty with advanced degree: 50% / Application Deadline: May 1 / One unique offering: Launching a Health Science Tract in Fall of 2019

The Montessori School of San Antonio

17722 Rogers Ranch Pkwy., 78258 / 210-492-3553 / montessorisa.org / Year founded: 1974/ Religious Affiliation: None / Total Enrollment: 341 / Co-ed / Grades served: PK3-8 / Uniform? No / Annual Tuition: Starting at \$9,365/ % of students receiving financial aid: 12% / Student: Teacher Ratio: 12:1 / Open House Dates: Jan. 26 / Application Deadline: No later than Feb. 1 for optimum consideration / One unique offering: Guides children to be passionate learners, independent thinkers, and engaged citizens.

New Braunfels Christian Academy

220 FM 1863, New Braunfels, 78132 / 830-629-1821 / nbcatax.org / Year founded: 1981/ Religious Affiliation: Non-denominational / Total Enrollment: 436 / Co-ed / Grades served: PK3-12 / Uniform? Yes / Annual Tuition: \$5,520-\$9,100 / % of students receiving financial aid: 14% / Student: Teacher Ratio: 15:1 / % Faculty with advanced degree: 33% / Open House Dates: Available by request / Application Deadline: Rolling / One unique offering: Offer program for children with learning challenges called the Einstein Center, with Educational Therapists trained through the National Institute of Learning Development and Scottish Rite Hospital.

Northwest Hills Christian School

8511 Heath Circle Drive, 78250 / 210-522-1102 / nwhcs.org / Year founded: 1969/ Religious Affiliation: Baptist / Total Enrollment: 168 / Co-ed / Grades served: PK2-8 / Uniform? Yes / Annual Tuition: \$4,340-\$4,490/ Student: Teacher Ratio: 10:1 / % Faculty with advanced degree: 15% / Open House Dates: Feb. 5 / Application Deadline: Rolling / One unique offering: Our school family acts and loves like family.

Our Lady of Perpetual Help Catholic School

16075 N. Evans Road, Selma 78154 / 210-651-6811 / olphselma.org / Year founded: 1901 / Religious Affiliation: Catholic / Total Enrollment: 433 / Co-ed / Grades served: PK3-8 / Uniform? Yes / Annual Tuition: \$5,500 / Student: Teacher Ratio: 11:1 / Open House Dates: Jan. 27 / Application Deadline: Rolling / One unique offering: It is our goal to ensure that the whole character - spiritually, intellectually, socially, emotionally, morally, and physically - of every student is developed to the fullest.

Providence Catholic School

1215 N. St. Mary's St., 78215 / 210-224-6651 / providencecatholicsschool.net / Year founded: 1951/ Religious Affiliation: Catholic / Total Enrollment: 261 / Girls / Grades served: 6-12 / Uniform? Yes / Annual Tuition: Middle school: \$6,320, High school: \$9,610/ Student: Teacher Ratio: 12:1 / Open House Dates: Jan. 17, April 11 / Application Deadline: Rolling / One unique offering: Providence Catholic School offers an all-girls, college prep education, that is grounded in faith, fostered by love, and proven by student success.

Rolling Hills Catholic School/Antonian Middle School

21140 Gathering Oak, 78260 / 210-497-0323 / rollinghillscatholic.org / Year founded: 1996/ Religious Affiliation: Catholic / Total Enrollment: 200+ / Co-ed / Grades served: PK3-8 / Uniform? Yes / Application Deadline: Rolling / One unique offering: Comprehensive curriculum with Spanish for all grades; weekly mass, extra-curricular to include: band, choir, art, drama, dance, cheer, and sports conditioning.



Saint Mary's Hall

9401 Starcrest Drive, 78217 / 210-483-9100 / smhall.org / Year founded: 1879/ Religious Affiliation: Nondenominational / Total Enrollment: 987 / Co-ed / Grades served: Montessori PK-12 / Uniform? Yes / Annual Tuition: \$11,500-\$25,870/ % of students receiving financial aid: 12% / Student: Teacher Ratio: 15:1 / % Faculty with advanced degree: 59% / Open House Dates: Lower school: Jan. 18 / Application Deadline: Feb. 8 for grades 1-8 and half and full-day kindergarten / One unique offering: Saint Mary's Hall echoes the offerings of a liberal arts college: rigorous academics, expert faculty, competitive athletics, extensive arts, and leadership development.

**San Antonio Academy of Texas**

117 E. French Place, 78212 / 210-733-7331 / sa-academy.org / Year founded: 1886/ Religious Affiliation: Nondenominational / Total Enrollment: 343 / Boys / Grades served: PK-8 / Uniform? Yes / Annual Tuition: \$14,000-\$23,000/ Student: Teacher Ratio: 10:1 / Open House Dates: Jan. 18 / Application Deadline: Feb. 8 / One unique offering: Year-round Enrichment classes that are open to the public.

San Antonio Christian School

19202 Redland Road, 78259 / 210-340-1864 / sachristian.org / Year founded: 1972/ Religious Affiliation: Christian / Total Enrollment: 1,035 / Co-ed / Grades served: PK-12 / Uniform? Yes / Annual Tuition: \$7,104-\$12,372/ % of students receiving financial aid: 10% / Student: Teacher Ratio: 8:1 / % Faculty with advanced degree: 27% / Open House Dates: April 6 / Application Deadline: Rolling / One unique offering: New 4-H Club includes students from elementary through high school, which participate in hands-on learning and leadership through animal care, archery, and other projects.

**St. Anthony Catholic School**

205 W. Huisache Ave., 78212 / 210-732-8801 / stanthonysa.org / Year founded: 1907/ Religious Affiliation: Catholic / Total Enrollment: 317 / Co-ed / Grades served: PK2-8 / Uniform? Yes / Annual Tuition: \$8,536 / Open House Dates: Jan. 24 / Application Deadline: Rolling / One unique offering: St. Anthony Catholic School educates a diverse student body in the Catholic faith, Christian values, and a strong traditional academic excellence offering extracurricular enrichment programs such as STEM, Robotics, and band. St. Anthony's also has an in house chef that prepares a well-balanced, healthy meal program for students.

St. George Episcopal School

6900 West Ave., 78213 / 210-342-4263 / saintgeorgeschool.org / Year founded: 1954/ Religious Affiliation: Episcopal / Total Enrollment: 513 / Boys / Grades served: Age 4-8th grade / Uniform? Yes / Annual Tuition: \$7,500-\$11,650/ % of students receiving financial aid: 22% / Student: Teacher Ratio: 10:1 / % Open House Dates: January 2019 / Application Deadline: Rolling / One unique offering: An advanced curriculum, competitive athletics, robust fine arts and cutting-edge technology in a close-knit community where all students are safe, known and loved.

**St. Gerard Catholic High School & Regional Middle School**

521 S. New Braunfels Ave., 78203 / 210-533-8061 / stgerardsa.org / Year founded: 1927/ Religious Affiliation: Catholic / Total Enrollment: 108 / Co-ed / Grades served: 6-12 / Uniform? Yes / Annual Tuition: \$4,000-\$6,300/ % of students receiving financial aid: 98% / Student: Teacher Ratio: 12:1 / % Faculty with advanced degree: 43% / Application Deadline: April 1, please call regarding late applications / One unique offering: We are the home of the Royal Family.

St. Gregory the Great Catholic School

700 Dewhurst Road, 78213 / 210-293-3299 / stgregorysa.org / Year founded: 1966/ Religious Affiliation: Catholic / Total Enrollment: 400 / Co-ed / Grades served: PK3-8 / Uniform? Yes / Annual Tuition: \$5,899-\$6,775/ % Faculty with advanced degree: 80% / Application Deadline: Rolling / One unique offering: We, in keeping with the Catholic tradition, nurture in our children and one another, spiritual, personal and academic growth through prayer and Christ-like service.

**St. John Paul II Catholic High School**

6720 FM 482 New Braunfels, 78132 / 830-643-0802 / johnpaul2chs.org / Year founded: 2009/ Religious Affiliation: Catholic / Total Enrollment: 213 / Co-ed / Grades served: 9-12 / Uniform? Yes / Annual Tuition: \$9,310/ % of students receiving financial aid: 20% / Student: Teacher Ratio: 12:1 / % Faculty with advanced degree: 80% / Open House Dates: Available by request / Application Deadline: Jan. 18 / One unique offering: Our core virtues of humility, faith, courage and love provide an outline for us to accomplish our goal of forming the next generation of young leaders in the person of Jesus Christ.

St. Luke Catholic School

4603 Manitou Road, 78228 / 210-434-2011 / stlukecatholic.org / Year founded: 1959/ Religious Affiliation: Catholic / Total Enrollment: 482 / Co-ed / Grades served: PK4-8 / Uniform? Yes / Annual Tuition: Approx. \$5,000/ % of students receiving financial aid: 32% / Student: Teacher Ratio: 13:1 / % Faculty with advanced degree: 65% / Open House Dates: Jan. 31 / Application Deadline: Rolling / One unique offering: An extracurricular music program with performing choir and strings ensembles.

**St. Luke's Episcopal School**

15 St. Luke's Lane, 78209 / 210-826-0664 / sles-sa.org / Year founded: 1947/ Religious Affiliation: Episcopal / Total Enrollment: 200 / Co-ed / Grades served: PK3-8 / Uniform? Yes / Annual Tuition: \$9,450-\$19,335/ % of students receiving financial aid: 30% / Student: Teacher Ratio: 10:1 / % Faculty with advanced degree: 41% / Open House Dates: January and October / Application Deadline: Rolling / One unique offering: A true social/emotional education program including chapel, community meetings and advisory.



St. Mary Magdalen School

1700 Clower St., 78201 / 210-735-1381 / stmmmsa.org / Year founded: 1942/ Religious Affiliation: Catholic / Total Enrollment: 451 / Co-ed / Grades served: 3 yrs-8th grade / Annual Tuition: \$4,300/ Student: Teacher Ratio: 12:1 / % Faculty with advanced degree: 50% / Application Deadline: Rolling / One unique offering: High-caliber dual language programming.

St. Matthew Catholic School

10703 Wurzbach Road, 78230 / 210-478-5044 / smcssa.org / Year founded: 1993/ Religious Affiliation: Catholic / Total Enrollment: 696 / Co-ed / Grades served: PK4-8 / Uniform? Yes / Annual Tuition: \$5,200-\$7,200/ % of students receiving financial aid: 7% / Student: Teacher Ratio: PK-1: 12:01, 2-8: 26:01 / % Faculty with advanced degree: 40% / Open House Dates: Jan. 30 / Application Deadline: Rolling / One unique offering: St. Matthew Catholic School is a technology driven school (every student receives an iPad) with a commitment to teaching 21st century skills.

St. Paul's Episcopal Montessori School

1018 E. Grayson St., 78208 / 210-271-2861 / stpaulsmontessori.org / Year founded: 2005/ Religious Affiliation: Episcopal / Total Enrollment: 113 / Co-ed / Grades served: 18 mos.-12 yrs. / Uniform? No / Annual Tuition: Approx. \$7,500/ % of students receiving financial aid: 18% / Student: Teacher Ratio: 14:1 / Application Deadline: Rolling / One unique offering: High-quality Montessori education that nurtures every child's unique mind, body and spirit.

St. Peter Prince of Apostles Catholic School

112 Marcia Place, 78209 / 210-824-3171 / stpeterprince.org / Year founded: 1926/ Religious Affiliation: Catholic / Total Enrollment: 137 / Co-ed / Grades served: 18 mos-8th grade / Uniform? Yes / Annual Tuition: PK3-4: \$6,635, k-8: \$6,015/ % Faculty with advanced degree: 71% / Open House Dates: Jan. 27 / Application Deadline: Rolling / One unique offering: Christ-centered, academically rigorous program, which includes a daily chapel period, character education and parish priests who teach middle school religion.

St. Thomas Episcopal School

1416 N. Loop 1604 E., 78232 / 210-494-3509 / stthomaskids.com / Year founded: 1974/ Religious Affiliation: Episcopal / Total Enrollment: 100 / Co-ed / Grades served: 2 yrs.-Elementary / Uniform? Yes / Annual Tuition: \$8,700 for elementary and full-time K/ Student: Teacher Ratio: 7:1 / % Faculty with advanced degree: 38% / Open House Dates: Jan. 30 / Application Deadline: March 1 for current students, May 1 for incoming students / One unique offering: St. Thomas is an inclusive faith-based community that empowers children to develop critical minds, caring hearts, and ethical foundations for academic excellence and spiritual growth. We focus on the whole child approach with STEAM activities with the use of our 1:1 Chromebook/iPad for all elementary students.

St. Thomas More Catholic School

4427 Moana Drive, 78218 / 210-655-2882 / st-thomas-more-school.org / Year founded: 1962/ Religious Affiliation: Catholic / Total Enrollment: 105 / Co-ed / Grades served: PK3-8 / Uniform? Yes / Annual Tuition: \$4,300/ % of students receiving financial aid: 30% / Student: Teacher Ratio: 10:1 / % Faculty with advanced degree: 10% / Application Deadline: Rolling / One unique offering: Empowering students to lead and achieve.

Sunshine Cottage School for Deaf Children

603 E. Hildebrand Ave., 78212 / 210-824-0579 / sunshinecottage.org / Year founded: 1947/ Total Enrollment: 159 / Co-ed / Grades served: pre-school-5th grade / Uniform? No / Annual Tuition: Hearing impaired: \$6,000, Typical hearing: \$3,000 / % of students receiving financial aid: 96% / Student: Teacher Ratio: 7:1 / % Faculty with advanced degree: 80% / Open House Dates: Call for appointment / One unique offering: Founded in 1947 by John and Dela White, Sunshine Cottage School for Deaf Children offers a Learning Adventure for all children. Sunshine Cottage is a private, non-profit school for children with hearing loss, as well as for children with typical hearing.

TMI Episcopal

20955 West Tejas Trail, 78257 / 210-698-7171 / tmi-sa.org / Year founded: 1893/ Religious Affiliation: Episcopal/ Co-ed / Grades served: 6-12 / Uniform? Yes / Annual Tuition: \$23,255/ % of students receiving financial aid: 20% / Student: Teacher Ratio: 9:1 / % Faculty with advanced degree: 72% / Application Deadline: Feb. 15 / One unique offering: Embracing Technology with programs such as robotics, advanced math topics, design, and programming, TMI prepares interested students to excel in the science, technology, engineering, arts, and mathematics (STEAM) fields.

Trinity Christian Academy

5415 N. Loop 1604 E., 78247 / 210-653-2800 / trinitychristianacademy-sa.com / Year founded: 1980/ Religious Affiliation: Nondenominational / Total Enrollment: 100 / Co-ed / Grades served: K-8 / Uniform? Yes / Annual Tuition: \$6,000-\$6,700 / % of students receiving financial aid: 30% / Application Deadline: Rolling / One unique offering: We have high academic standards taught in a strongly Christian environment that is balanced with a wide array of afterschool sports activities.

Trinity United Methodist School

5319 Newcome Drive, 78229 / 210-684-5214 / trinityums.org / Year founded: 1960/ Religious Affiliation: Methodist / Total Enrollment: 120 / Co-ed / Grades served: 18 mos.-5th grade / Uniform? Yes / Annual Tuition: \$4,115-\$5,649 / % of students receiving financial aid: 5% / Student: Teacher Ratio: 4:1-10:1 / % Faculty with advanced degree: 60% / Open House Date: Jan. 26 / Application Deadline: May 4 / One unique offering: We offer an accelerated curriculum in a nurturing setting, Teaching to the whole child.

The Winston School San Antonio

8565 Ewing Halsell Drive, 78229 / 210-615-6544 / winston-sa.org / Year founded: 1985/ Religious Affiliation: None / Total Enrollment: 197 / Co-ed / Grades served: K-12 / Uniform? Yes / Annual Tuition: \$18,000 / % of students receiving financial aid: 22% / Student: Teacher Ratio: 7:1 / % Faculty with advanced degree: 28% / Open House Date: Jan. 8 and April 9 / Application Deadline: Rolling / One unique offering: The Winston School San Antonio is the only school in South Texas that offers a college preparatory education to students with learning differences.